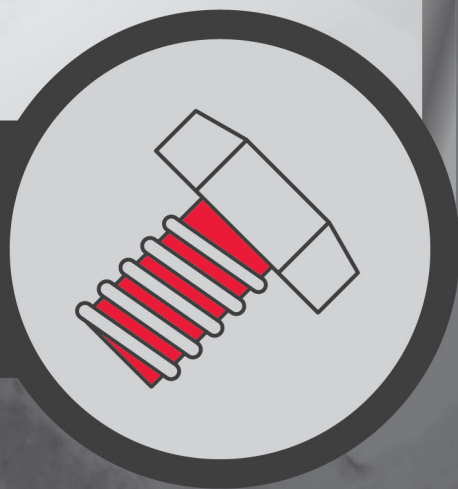


**WESTON**<sup>®</sup>  
TOOLS



**TORNILLOS  
Y SUJETADORES**



CATÁLOGO **2023**

**i INFORMACIÓN IMPORTANTE**

Toda la línea de tornillería se compra en kilo y se vende por pieza, por tanto, las cantidades pueden tener una variación de  $\pm 2\%$ .

**i SELECCIÓN DE TORNILLOS**

- Marcas de Identificación de Grados
- Fuerza de Tensión en los Tornillos

Ver página 387

**Tornillo Hexagonal Grado 2 Pulido Fraccional**

Rosca fraccional  
RC: Rosca Completa  
RP: Rosca Parcial

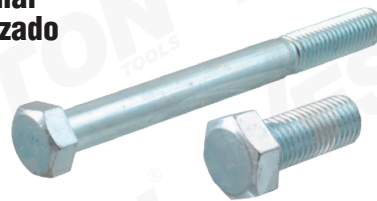


Código	Rosca	Medidas	MIN
ZN-19010	RC	1/4"-20 x 3/4"	100
ZN-19012	RC	1/4"-20 x 1"	100
ZN-19014	RC	1/4"-20 x 1-1/4"	100
ZN-19016	RC	1/4"-20 x 1-1/2"	100
ZN-19018	RC	1/4"-20 x 2"	100
● ZN-19018-RP	RP	1/4"-20 x 2"	100
ZN-19020	RC	1/4"-20 x 2-1/2"	100
● ZN-19020-RP	RP	1/4"-20 x 2-1/2"	100
ZN-19022	RC	1/4"-20 x 3"	50
● ZN-19022-RP	RP	1/4"-20 x 3"	50
ZN-19024	RC	1/4"-20 x 3-1/2"	50
● ZN-19024-RP	RP	1/4"-20 x 3-1/2"	50
ZN-19026	RC	1/4"-20 x 4"	50
ZN-19028	RP	1/4"-20 x 4-1/2"	50
ZN-19030	RP	1/4"-20 x 5"	50
ZN-19032	RP	1/4"-20 x 5-1/2"	50
ZN-19034	RP	1/4"-20 x 6"	50
ZN-19036	RC	5/16"-18 x 3/4"	100
ZN-19038	RC	5/16"-18 x 1"	100
ZN-19040	RC	5/16"-18 x 1-1/4"	100
ZN-19042	RC	5/16"-18 x 1-1/2"	100
ZN-19044	RC	5/16"-18 x 2"	100
ZN-19046	RC	5/16"-18 x 2-1/2"	100
● ZN-19046-RP	RP	5/16"-18 x 2-1/2"	100
ZN-19048	RC	5/16"-18 x 3"	50
● ZN-19048-RP	RP	5/16"-18 x 3"	50
ZN-19050	RC	5/16"-18 x 3-1/2"	50
● ZN-19050-RP	RP	5/16"-18 x 3-1/2"	50
ZN-19052	RC	5/16"-18 x 4"	50
ZN-19054	RP	5/16"-18 x 4-1/2"	50
ZN-19056	RP	5/16"-18 x 5"	50
ZN-19058	RP	5/16"-18 x 5-1/2"	50
ZN-19060	RP	5/16"-18 x 6"	50
ZN-19062	RC	3/8"-16 x 1"	100
ZN-19064	RC	3/8"-16 x 1-1/4"	100
ZN-19066	RC	3/8"-16 x 1-1/2"	100
ZN-19068	RC	3/8"-16 x 2"	100
ZN-19070	RC	3/8"-16 x 2-1/2"	50
● ZN-19070-RP	RP	3/8"-16 x 2-1/2"	50
ZN-19072	RC	3/8"-16 x 3"	50
● ZN-19072-RP	RP	3/8"-16 x 3"	50
ZN-19074	RC	3/8"-16 x 3-1/2"	50
● ZN-19074-RP	RP	3/8"-16 x 3-1/2"	50
ZN-19076	RC	3/8"-16 x 4"	50
● ZN-19076-RP	RP	3/8"-16 x 4"	50
ZN-19078	RP	3/8"-16 x 4-1/2"	50
ZN-19080	RP	3/8"-16 x 5"	50
ZN-19082	RP	3/8"-16 x 5-1/2"	50
ZN-19084	RC	1/2"-13 x 1"	50
ZN-19086	RC	1/2"-13 x 1-1/4"	50
ZN-19088	RC	1/2"-13 x 1-1/2"	50

Código	Rosca	Medidas	MIN
ZN-19090	RC	1/2"-13 x 2"	50
ZN-19092	RC	1/2"-13 x 2-1/2"	50
ZN-19094	RC	1/2"-13 x 3"	25
ZN-19096	RC	1/2"-13 x 3-1/2"	20
ZN-19098	RC	1/2"-13 x 4"	25
ZN-19100	RP	1/2"-13 x 4-1/2"	25
ZN-19102	RP	1/2"-13 x 5"	25
ZN-19104	RP	1/2"-13 x 5-1/2"	25
ZN-19106	RP	1/2"-13 x 6"	25
ZN-19108	RP	1/2"-13 x 8"	10
ZN-19110	RP	1/2"-13 x 10"	10
● ZN-19438P	RC	5/8"-11 x 1"	50
ZN-19112	RC	5/8"-11 x 1-1/4"	50
ZN-19114	RC	5/8"-11 x 1-1/2"	25
ZN-19116	RC	5/8"-11 x 2"	25
ZN-19118	RC	5/8"-11 x 2-1/2"	25
ZN-19120	RC	5/8"-11 x 3"	25
ZN-19122	RC	5/8"-11 x 3-1/2"	20
ZN-19124	RC	5/8"-11 x 4"	20
● ZN-19124-RP	RP	5/8"-11 x 4"	20
ZN-19126	RP	5/8"-11 x 5"	15
ZN-19128	RP	5/8"-11 x 6"	15
ZN-19130	RP	5/8"-11 x 8"	10
ZN-19132	RP	5/8"-11 x 10"	10
ZN-19134	RC	3/4"-10 x 2"	20
ZN-19136	RC	3/4"-10 x 2-1/2"	20
ZN-19138	RC	3/4"-10 x 3"	20
ZN-19140	RC	3/4"-10 x 3-1/2"	15
ZN-19142	RC	3/4"-10 x 4"	15
ZN-19144	RP	3/4"-10 x 5"	10
ZN-19146	RP	3/4"-10 x 6"	10
ZN-19148	RP	3/4"-10 x 8"	10
ZN-19150	RP	3/4"-10 x 10"	10
ZN-19152	RC	7/8"-9 x 2-1/2"	15
ZN-19154	RC	7/8"-9 x 3"	15
ZN-19156	RC	7/8"-9 x 3-1/2"	15
ZN-19158	RC	7/8"-9 x 4"	15
ZN-19160	RP	7/8"-9 x 5"	10
ZN-19162	RP	7/8"-9 x 6"	10
ZN-19164	RP	7/8"-9 x 8"	10
ZN-19166	RP	7/8"-9 x 10"	5
ZN-19168	RC	1"-8 x 2-1/2"	1
ZN-19170	RC	1"-8 x 3"	1
ZN-19172	RC	1"-8 x 3-1/2"	1
ZN-19174	RC	1"-8 x 4"	1
ZN-19176	RP	1"-8 x 5"	1
ZN-19178	RP	1"-8 x 6"	1
ZN-19180	RP	1"-8 x 8"	1
ZN-19182	RP	1"-8 x 10"	1
ZN-19184	RP	1"-8 x 12"	1

**Tornillo Hexagonal Grado 2 Galvanizado Fraccional**

Rosca fraccional  
RC: Rosca Completa  
RP: Rosca Parcial



Código	Rosca	Medidas	MIN
ZN-19310	RC	1/4"-20 x 1/2"	100
ZN-19312	RC	1/4"-20 x 3/4"	100
ZN-19314	RC	1/4"-20 x 1"	100
ZN-19316	RC	1/4"-20 x 1-1/4"	100
● ZN-19316-RP	RP	1/4"-20 x 1-1/4"	100
ZN-19318	RC	1/4"-20 x 1-1/2"	100
● ZN-19318-RP	RP	1/4"-20 x 1-1/2"	100
ZN-19320	RC	1/4"-20 x 1-3/4"	100
● ZN-19320-RP	RP	1/4"-20 x 1-3/4"	100
ZN-19322	RC	1/4"-20 x 2"	100
ZN-19324	RC	1/4"-20 x 2-1/2"	100
● ZN-19324-RP	RP	1/4"-20 x 2-1/2"	100
ZN-19326	RC	1/4"-20 x 3"	50
● ZN-19326-RP	RP	1/4"-20 x 3"	50
ZN-19328	RC	1/4"-20 x 3-1/2"	50
ZN-19330	RC	1/4"-20 x 4"	50
ZN-19332	RP	1/4"-20 x 4-1/2"	50
ZN-19334	RP	1/4"-20 x 5"	50
ZN-19335	RP	1/4"-20 x 5-1/2"	100
ZN-19337	RP	1/4"-20 x 6"	100
ZN-19338	RC	5/16"-18 x 3/4"	100
ZN-19340	RC	5/16"-18 x 1"	100
ZN-19342	RC	5/16"-18 x 1-1/4"	100
ZN-19344	RC	5/16"-18 x 1-1/2"	100
ZN-19346	RC	5/16"-18 x 1-3/4"	100
ZN-19348	RC	5/16"-18 x 2"	100
ZN-19350	RC	5/16"-18 x 2-1/2"	100
ZN-19352	RC	5/16"-18 x 3"	50
● ZN-19352-RP	RP	5/16"-18 x 3"	50
ZN-19354	RC	5/16"-18 x 3-1/2"	50
● ZN-19354-RP	RP	5/16"-18 x 3-1/2"	50
ZN-19356	RC	5/16"-18 x 4"	50
ZN-19358	RP	5/16"-18 x 4-1/2"	50
ZN-19360	RP	5/16"-18 x 5"	50
ZN-19362	RP	5/16"-18 x 5-1/2"	50
ZN-19364	RP	5/16"-18 x 6"	50
ZN-19368	RC	3/8"-16 x 3/4"	100
ZN-19370	RC	3/8"-16 x 1"	100
ZN-19372	RC	3/8"-16 x 1-1/4"	100
ZN-19374	RC	3/8"-16 x 1-1/2"	100
ZN-19376	RC	3/8"-16 x 1-3/4"	100
ZN-19378	RC	3/8"-16 x 2"	100
ZN-19380	RC	3/8"-16 x 2-1/2"	50
● ZN-19380-RP	RP	3/8"-16 x 2-1/2"	50
ZN-19382	RC	3/8"-16 x 3"	50
● ZN-19382-RP	RP	3/8"-16 x 3"	50
ZN-19384	RC	3/8"-16 x 3-1/2"	50
● ZN-19384-RP	RP	3/8"-16 x 3-1/2"	50
ZN-19386	RC	3/8"-16 x 4"	50
ZN-19388	RP	3/8"-16 x 4-1/2"	50
ZN-19390	RP	3/8"-16 x 5"	50
ZN-19392	RP	3/8"-16 x 5-1/2"	50
ZN-19394	RP	3/8"-16 x 6"	50
ZN-19396	RP	3/8"-16 x 7"	50
ZN-19398	RP	3/8"-16 x 8"	50
ZN-19400	RP	3/8"-16 x 10"	50
ZN-19401	RC	7/16"-14 x 1"	100
ZN-19401-01	RC	7/16"-14 x 1-1/4"	50
ZN-19401-03	RC	7/16"-14 x 1-1/2"	100
ZN-19401-05	RC	7/16"-14 x 1-3/4"	100
ZN-19401-07	RC	7/16"-14 x 2"	50
ZN-19401-09	RC	7/16"-14 x 2-1/2"	100
ZN-19401-11	RC	7/16"-14 x 3"	50
ZN-19401-13	RC	7/16"-14 x 3-1/2"	50
ZN-19401-15	RC	7/16"-14 x 4"	50
ZN-19401-17	RP	7/16"-14 x 4-1/2"	25
ZN-19401-19	RP	7/16"-14 x 5"	25
ZN-19401-21	RP	7/16"-14 x 5-1/2"	50
ZN-19401-23	RP	7/16"-14 x 6"	50
ZN-19402	RC	1/2"-13 x 1/2"	100
ZN-19406	RC	1/2"-13 x 1"	50

Código	Rosca	Medidas	MIN
ZN-19408	RC	1/2"-13 x 1-1/4"	50
ZN-19410	RC	1/2"-13 x 1-1/2"	50
ZN-19412	RC	1/2"-13 x 1-3/4"	50
ZN-19414	RC	1/2"-13 x 2"	50
● ZN-19414-RP	RP	1/2"-13 x 2"	50
ZN-19416	RC	1/2"-13 x 2-1/2"	50
● ZN-19416-RP	RP	1/2"-13 x 2-1/2"	50
ZN-19418	RC	1/2"-13 x 3"	25
● ZN-19418-RP	RP	1/2"-13 x 3"	25
ZN-19420	RC	1/2"-13 x 3-1/2"	25
● ZN-19420-RP	RP	1/2"-13 x 3-1/2"	25
ZN-19422	RC	1/2"-13 x 4"	25
ZN-19424	RP	1/2"-13 x 4-1/2"	25
ZN-19426	RP	1/2"-13 x 5"	25
ZN-19428	RP	1/2"-13 x 5-1/2"	25
ZN-19430	RP	1/2"-13 x 6"	25
ZN-19432	RP	1/2"-13 x 7"	10
ZN-19434	RP	1/2"-13 x 8"	10
ZN-19436	RP	1/2"-13 x 10"	10
ZN-19438	RC	5/8"-11 x 1"	50
ZN-19440	RC	5/8"-11 x 1-1/4"	50
ZN-19442	RC	5/8"-11 x 1-1/2"	25
ZN-19444	RC	5/8"-11 x 1-3/4"	25
ZN-19446	RC	5/8"-11 x 2"	25
ZN-19448	RC	5/8"-11 x 2-1/2"	25
● ZN-19448-RP	RP	5/8"-11 x 2-1/2"	25
ZN-19450	RC	5/8"-11 x 3"	25
ZN-19452	RC	5/8"-11 x 3-1/2"	20
● ZN-19452-RP	RP	5/8"-11 x 3-1/2"	20
ZN-19454	RC	5/8"-11 x 4"	20
ZN-19456	RP	5/8"-11 x 4-1/2"	20
ZN-19458	RP	5/8"-11 x 5"	15
ZN-19460	RP	5/8"-11 x 5-1/2"	15
ZN-19462	RP	5/8"-11 x 6"	15
ZN-19462-01	RP	5/8"-11 x 7"	25
ZN-19462-03	RP	5/8"-11 x 8"	25
ZN-19462-05	RP	5/8"-11 x 9"	25
ZN-19462-07	RP	5/8"-11 x 10"	25
ZN-19464	RC	3/4"-10 x 1-1/2"	25
ZN-19466	RC	3/4"-10 x 1-3/4"	25
ZN-19468	RC	3/4"-10 x 2"	20
ZN-19470	RC	3/4"-10 x 2-1/2"	20
ZN-19472	RC	3/4"-10 x 3"	20
● ZN-19472-RP	RP	3/4"-10 x 3"	20
ZN-19474	RC	3/4"-10 x 3-1/2"	15
ZN-19476	RC	3/4"-10 x 4"	15
ZN-19478	RP	3/4"-10 x 4-1/2"	10
ZN-19480	RP	3/4"-10 x 5"	10
ZN-19482	RP	3/4"-10 x 5-1/2"	10
ZN-19484	RP	3/4"-10 x 6"	10
ZN-19486	RP	3/4"-10 x 7"	10
ZN-19488	RP	3/4"-10 x 8"	10
ZN-19490	RP	3/4"-10 x 9"	25
ZN-19492	RP	3/4"-10 x 10"	25
ZN-19494	RC	7/8"-9 x 2"	15
ZN-19496	RC	7/8"-9 x 2-1/2"	15
ZN-19498	RC	7/8"-9 x 3"	15
ZN-19500	RC	7/8"-9 x 3-1/2"	15
ZN-19502	RC	7/8"-9 x 4"	15
ZN-19504	RP	7/8"-9 x 4-1/2"	15
ZN-19506	RP	7/8"-9 x 5"	10
ZN-19508	RP	7/8"-9 x 5-1/2"	10
ZN-19510	RP	7/8"-9 x 6"	10
ZN-19520	RC	1"-8 x 2"	1
ZN-19522	RC	1"-8 x 2-1/2"	1
ZN-19524	RC	1"-8 x 3"	1
ZN-19526	RC	1"-8 x 3-1/2"	1
ZN-19528	RC	1"-8 x 4"	1
ZN-19530</			



## Tornillo Hexagonal Estructural A325 Negro Fraccional

Rosca fraccional



Presentación



Código	Medidas	MIN
ZN-09010	1/2"-13 x 1-1/2"	50
ZN-09012	1/2"-13 x 1-3/4"	50
ZN-09014	1/2"-13 x 2"	50
ZN-09016	1/2"-13 x 2-1/4"	50
ZN-09018	1/2"-13 x 2-1/2"	50
ZN-09020	1/2"-13 x 2-3/4"	25
ZN-09022	1/2"-13 x 3"	25
ZN-09024	5/8"-11 x 1-1/2"	25
ZN-09026	5/8"-11 x 1-3/4"	25
ZN-09028	5/8"-11 x 2"	25
ZN-09030	5/8"-11 x 2-1/4"	25
ZN-09032	5/8"-11 x 2-1/2"	25
ZN-09034	5/8"-11 x 2-3/4"	25
ZN-09036	5/8"-11 x 3"	25
ZN-09038	5/8"-11 x 3-1/2"	20
ZN-09040	3/4"-10 x 1-3/4"	20
ZN-09042	3/4"-10 x 2"	20
ZN-09044	3/4"-10 x 2-1/4"	20
ZN-09046	3/4"-10 x 2-1/2"	20
ZN-09048	3/4"-10 x 2-3/4"	20
ZN-09050	3/4"-10 x 3"	20
ZN-09052	3/4"-10 x 3-1/4"	20
ZN-09054	3/4"-10 x 3-1/2"	20
ZN-09056	3/4"-10 x 4"	20
ZN-09058	1"-8 x 3"	5
ZN-09060	1"-8 x 3-1/2"	5
ZN-09062	1-1/4"-7 x 4"	1
ZN-09064	1-1/4"-7 x 4-1/4"	1

## Tornillo Hexagonal Estructural A325 GIC Fraccional

Rosca fraccional



Presentación

Código	Medidas	MIN
ZN-09210	1/2"-13 x 1-1/2"	50
ZN-09212	1/2"-13 x 1-3/4"	50
ZN-09214	1/2"-13 x 2"	50
ZN-09216	1/2"-13 x 2-1/4"	50
ZN-09218	1/2"-13 x 2-1/2"	50
ZN-09220	1/2"-13 x 2-3/4"	25
ZN-09222	1/2"-13 x 3"	25
ZN-09224	5/8"-11 x 1-1/2"	25
ZN-09226	5/8"-11 x 1-3/4"	25
ZN-09228	5/8"-11 x 2"	25
ZN-09230	5/8"-11 x 2-1/4"	25
ZN-09232	5/8"-11 x 2-1/2"	25
ZN-09234	5/8"-11 x 2-3/4"	25
ZN-09236	5/8"-11 x 3"	25
ZN-09238	5/8"-11 x 3-1/2"	20
ZN-09240	3/4"-10 x 1-3/4"	20
ZN-09242	3/4"-10 x 2"	20
ZN-09244	3/4"-10 x 2-1/4"	20
ZN-09246	3/4"-10 x 2-1/2"	20
ZN-09248	3/4"-10 x 2-3/4"	20
ZN-09250	3/4"-10 x 3"	20
ZN-09252	3/4"-10 x 3-1/4"	20
ZN-09254	3/4"-10 x 3-1/2"	20
ZN-09256	3/4"-10 x 4"	20

## Tornillo Hexagonal Grado 5 Negro Fraccional

Rosca fraccional



Código	Medidas	MIN
ZN-21011	1/4"-20 x 3/4"	100
ZN-21012	1/4"-20 x 1"	100
ZN-21013	1/4"-20 x 1-1/4"	100
ZN-21014	1/4"-20 x 1-1/2"	100
ZN-21015	1/4"-20 x 1-3/4"	100
ZN-21016	1/4"-20 x 2"	100
ZN-21017	1/4"-20 x 2-1/2"	100
ZN-21018	1/4"-20 x 3"	100
ZN-21019	1/4"-20 x 3-1/2"	100
ZN-21020	1/4"-20 x 4"	100
ZN-21021	1/4"-20 x 4-1/2"	100
ZN-21022	1/4"-20 x 5"	-
ZN-21023	1/4"-20 x 5-1/2"	-
ZN-21024	1/4"-20 x 6"	-
ZN-21036	5/16"-18 x 1/2"	100
ZN-21037	5/16"-18 x 3/4"	100
ZN-21038	5/16"-18 x 1"	100
ZN-21039	5/16"-18 x 1-1/4"	100
ZN-21040	5/16"-18 x 1-1/2"	100
ZN-21041	5/16"-18 x 1-3/4"	100
ZN-21042	5/16"-18 x 2"	100
ZN-21043	5/16"-18 x 2-1/2"	100
ZN-21044	5/16"-18 x 3"	50
ZN-21045	5/16"-18 x 3-1/2"	50
ZN-21046	5/16"-18 x 4"	50
ZN-21047	5/16"-18 x 4-1/2"	50
ZN-21048	5/16"-18 x 5"	50
ZN-21049	5/16"-18 x 5-1/2"	50
ZN-21050	5/16"-18 x 6"	50
ZN-21066	3/8"-16 x 1/2"	100
ZN-21067	3/8"-16 x 3/4"	100
ZN-21068	3/8"-16 x 1"	100
ZN-21069	3/8"-16 x 1-1/4"	100
ZN-21070	3/8"-16 x 1-1/2"	100
ZN-21071	3/8"-16 x 1-3/4"	100
ZN-21072	3/8"-16 x 2"	100
ZN-21073	3/8"-16 x 2-1/2"	50
ZN-21074	3/8"-16 x 3"	50
ZN-21075	3/8"-16 x 3-1/2"	50
ZN-21076	3/8"-16 x 4"	50
ZN-21077	3/8"-16 x 4-1/2"	50
ZN-21078	3/8"-16 x 5"	50
ZN-21079	3/8"-16 x 5-1/2"	50
ZN-21080	3/8"-16 x 6"	50
ZN-21081	3/8"-16 x 7"	10
ZN-21082	7/16"-14 x 1"	100
ZN-21083	7/16"-14 x 1-1/4"	100
ZN-21084	7/16"-14 x 1-1/2"	100
ZN-21085	7/16"-14 x 1-3/4"	100
ZN-21086	7/16"-14 x 2"	100
ZN-21087	7/16"-14 x 2-1/2"	100
ZN-21088	7/16"-14 x 3"	50
ZN-21089	7/16"-14 x 3-1/2"	50
ZN-21090	7/16"-14 x 4"	50
ZN-21091	7/16"-14 x 4-1/2"	50
ZN-21092	7/16"-14 x 5"	50
ZN-21093	7/16"-14 x 5-1/2"	50
ZN-21094	7/16"-14 x 6"	50
ZN-21096	1/2"-13 x 1/2"	50
ZN-21097	1/2"-13 x 3/4"	50
ZN-21098	1/2"-13 x 1"	50
ZN-21099	1/2"-13 x 1-1/4"	50
ZN-21100	1/2"-13 x 1-1/2"	50
ZN-21101	1/2"-13 x 1-3/4"	50

Código	Medidas	MIN
ZN-21102	1/2"-13 x 2"	50
ZN-21103	1/2"-13 x 2-1/2"	50
ZN-21104	1/2"-13 x 3"	25
ZN-21105	1/2"-13 x 3-1/2"	25
ZN-21106	1/2"-13 x 4"	25
ZN-21107	1/2"-13 x 4-1/2"	25
ZN-21108	1/2"-13 x 5"	25
ZN-21109	1/2"-13 x 5-1/2"	25
ZN-21110	1/2"-13 x 6"	25
ZN-21111	1/2"-13 x 7"	25
ZN-21112	1/2"-13 x 8"	25
ZN-21113	1/2"-13 x 9"	25
ZN-21114	1/2"-13 x 10"	25
ZN-21115	9/16"-12 x 1-1/4"	50
ZN-21116	9/16"-12 x 1-1/2"	50
ZN-21117	9/16"-12 x 1-3/4"	50
ZN-21118	9/16"-12 x 2"	50
ZN-21119	9/16"-12 x 2-1/2"	50
ZN-21120	9/16"-12 x 3"	50
ZN-21121	9/16"-12 x 3-1/2"	50
ZN-21122	9/16"-12 x 4"	25
ZN-21123	9/16"-12 x 4-1/2"	25
ZN-21124	9/16"-12 x 5"	25
ZN-21125	9/16"-12 x 5-1/2"	25
ZN-21125-01	9/16"-12 x 6"	25
ZN-21126	5/8"-11 x 1"	25
ZN-21127	5/8"-11 x 1-1/4"	25
ZN-21128	5/8"-11 x 1-1/2"	25
ZN-21129	5/8"-11 x 1-3/4"	25
ZN-21130	5/8"-11 x 2"	25
ZN-21131	5/8"-11 x 2-1/2"	25
ZN-21132	5/8"-11 x 3"	25
ZN-21133	5/8"-11 x 3-1/2"	20
ZN-21134	5/8"-11 x 4"	20
ZN-21135	5/8"-11 x 4-1/2"	20
ZN-21136	5/8"-11 x 5"	15
ZN-21137	5/8"-11 x 5-1/2"	15
ZN-21138	5/8"-11 x 6"	15
ZN-21139	5/8"-11 x 7"	15
ZN-21140	5/8"-11 x 8"	15
ZN-21141	5/8"-11 x 9"	15
ZN-21142	5/8"-11 x 10"	15
ZN-21152	3/4"-10 x 1-1/2"	25
ZN-21153	3/4"-10 x 1-3/4"	25
ZN-21154	3/4"-10 x 2"	25
ZN-21155	3/4"-10 x 2-1/2"	25
ZN-21156	3/4"-10 x 3"	25
ZN-21157	3/4"-10 x 3-1/2"	25
ZN-21158	3/4"-10 x 4"	25
ZN-21159	3/4"-10 x 4-1/2"	10
ZN-21160	3/4"-10 x 5"	10
ZN-21161	3/4"-10 x 5-1/2"	10
ZN-21162	3/4"-10 x 6"	10
ZN-21163	3/4"-10 x 7"	10
ZN-21164	3/4"-10 x 8"	10
ZN-21165	3/4"-10 x 9"	10
ZN-21166	3/4"-10 x 10"	10
ZN-21173	7/8"-9 x 2"	15
ZN-21174	7/8"-9 x 2-1/2"	15
ZN-21175	7/8"-9 x 3"	15
ZN-21176	7/8"-9 x 3-1/2"	15
ZN-21177	7/8"-9 x 4"	15
ZN-21178	7/8"-9 x 4-1/2"	10

Código	Medidas	MIN
ZN-21179	7/8"-9 x 5"	10
ZN-21180	7/8"-9 x 5-1/2"	10
ZN-21181	7/8"-9 x 6"	10
ZN-21182	7/8"-9 x 7"	10
ZN-21183	7/8"-9 x 8"	10
ZN-21184	7/8"-9 x 9"	10
ZN-21185	7/8"-9 x 10"	10
ZN-21189	1"-8 x 2"	10
ZN-21190	1"-8 x 2-1/2"	10
ZN-21191	1"-8 x 3"	10
ZN-21192	1"-8 x 3-1/2"	10
ZN-21193	1"-8 x 4"	10
ZN-21194	1"-8 x 4-1/2"	10
ZN-21195	1"-8 x 5"	10
ZN-21196	1"-8 x 5-1/2"	10
ZN-21197	1"-8 x 6"	10
ZN-21198	1"-8 x 7"	1
ZN-21199	1"-8 x 8"	1
ZN-21200	1"-8 x 9"	10
ZN-21201	1"-8 x 10"	10
ZN-21206	1-1/8" x 2-1/2"	10
ZN-21208	1-1/8" x 3"	10
ZN-21210	1-1/8" x 3-1/2"	10
ZN-21212	1-1/8" x 4"	10
ZN-21214	1-1/8" x 4-1/2"	10
ZN-21216	1-1/8" x 5"	10
ZN-21218	1-1/8" x 5-1/2"	10
ZN-21220	1-1/8" x 6"	10
ZN-21222	1-1/8" x 6-1/2"	5
ZN-21224	1-1/8" x 7"	5
ZN-21226	1-1/8" x 8"	5
ZN-21228	1-1/8" x 9"	5
ZN-21230	1-1/8" x 10"	5
ZN-21232	1-1/8" x 11"	5
ZN-21234	1-1/8" x 12"	5
ZN-21236	1-1/4" x 2-1/2"	5
ZN-21238	1-1/4" x 3"	5
ZN-21240	1-1/4" x 3-1/2"	5
ZN-21242	1-1/4" x 4"	5
ZN-21244	1-1/4" x 4-1/2"	5
ZN-21246	1-1/4" x 5"	5
ZN-21248	1-1/4" x 5-1/2"	5
ZN-21250	1-1/4" x 6"	5
ZN-21252	1-1/4" x 6-1/2"	5
ZN-21254	1-1/4" x 7"	5
ZN-21256	1-1/4" x 8"	5
ZN-21258	1-1/4" x 9"	5
ZN-21260	1-1/4" x 10"	5
ZN-21262	1-1/4" x 11"	5
ZN-21264	1-1/4" x 12"	5
ZN-21266	1-1/2" x 3"	1
ZN-21268	1-1/2" x 3-1/2"	1
ZN-21270	1-1/2" x 4"	1
ZN-21272	1-1/2" x 4-1/2"	1
ZN-21274	1-1/2" x 5"	1
ZN-21276	1-1/2" x 5-1/2"	1
ZN-21278	1-1/2" x 6"	1
ZN-21280	1-1/2" x 7"	1
ZN-21282	1-1/2" x 8"	1
ZN-21284	1-1/2" x 9"	1
ZN-21286	1-1/2" x 10"	1
ZN-21288	1-1/2" x 11"	1
ZN-21290	1-1/2" x 12"	1



Presentación



### Tornillo Hexagonal Grado 8 Negro Fraccional

Rosca fraccional



Presentación

Código	Medidas	MIN	Código	Medidas	MIN
ZN-23010	1/4"-20x1/2"	100	ZN-23138	1/2"-13x3-1/2"	25
ZN-23012	1/4"-20x3/4"	100	ZN-23140	1/2"-13x4"	25
ZN-23014	1/4"-20x1"	100	ZN-23142	1/2"-13x4-1/2"	25
ZN-23016	1/4"-20x1-1/4"	100	ZN-23144	1/2"-13x5"	25
ZN-23018	1/4"-20x1-1/2"	100	ZN-23146	1/2"-13x5-1/2"	25
ZN-23020	1/4"-20x1-3/4"	100	ZN-23148	1/2"-13x6"	25
ZN-23022	1/4"-20x2"	100	ZN-23150	1/2"-13x6-1/2"	10
ZN-23024	1/4"-20x2-1/4"	100	ZN-23152	1/2"-13x7"	10
ZN-23026	1/4"-20x2-1/2"	100	ZN-23154	1/2"-13x8"	10
ZN-23028	1/4"-20x3"	100	ZN-23156	1/2"-13x9"	10
ZN-23030	1/4"-20x3-1/2"	100	ZN-23158	1/2"-13x10"	10
ZN-23032	1/4"-20x4"	100	ZN-23160	1/2"-13x11"	10
ZN-23034	5/16"-18x5/8"	100	ZN-23162	1/2"-13x12"	10
ZN-23036	5/16"-18x3/4"	100	ZN-23164	5/8"-11x1-1/4"	25
ZN-23038	5/16"-18x1"	100	ZN-23166	5/8"-11x1-1/2"	25
ZN-23040	5/16"-18x1-1/4"	100	ZN-23168	5/8"-11x1-3/4"	25
ZN-23042	5/16"-18x1-1/2"	100	ZN-23170	5/8"-11x2"	25
ZN-23044	5/16"-18x2"	100	ZN-23172	5/8"-11x2-1/4"	25
ZN-23046	5/16"-18x2-1/4"	100	ZN-23174	5/8"-11x2-1/2"	25
ZN-23048	5/16"-18x2-1/2"	100	ZN-23176	5/8"-11x3"	25
ZN-23050	5/16"-18x3"	50	ZN-23178	5/8"-11x3-1/2"	20
ZN-23052	5/16"-18x3-1/2"	50	ZN-23180	5/8"-11x4"	20
ZN-23054	5/16"-18x4"	50	ZN-23182	5/8"-11x4-1/2"	20
ZN-23056	5/16"-18x4-1/2"	50	ZN-23184	5/8"-11x5"	15
ZN-23058	5/16"-18x5"	50	ZN-23186	5/8"-11x5-1/2"	15
ZN-23060	5/16"-18x5-1/2"	50	ZN-23188	5/8"-11x6"	15
ZN-23062	5/16"-18x6"	50	ZN-23190	5/8"-11x6-1/2"	15
ZN-23064	3/8"-16x3/4"	100	ZN-23192	5/8"-11x7"	15
ZN-23066	3/8"-16x1"	100	ZN-23194	5/8"-11x8"	10
ZN-23068	3/8"-16x1-1/4"	100	ZN-23196	5/8"-11x9"	10
ZN-23070	3/8"-16x1-1/2"	100	ZN-23198	5/8"-11x10"	10
ZN-23072	3/8"-16x1-3/4"	100	ZN-23200	5/8"-11x11"	10
ZN-23074	3/8"-16x2"	100	ZN-23202	5/8"-11x12"	10
ZN-23076	3/8"-16x2-1/4"	100	ZN-23204	3/4"-10x1-1/2"	25
ZN-23078	3/8"-16x2-1/2"	50	ZN-23206	3/4"-10x1-3/4"	25
ZN-23080	3/8"-16x3"	50	ZN-23208	3/4"-10x2"	25
ZN-23082	3/8"-16x3-1/2"	50	ZN-23210	3/4"-10x2-1/4"	25
ZN-23084	3/8"-16x4"	50	ZN-23212	3/4"-10x2-1/2"	25
ZN-23086	3/8"-16x4-1/2"	50	ZN-23214	3/4"-10x3"	25
ZN-23088	3/8"-16x5"	50	ZN-23216	3/4"-10x3-1/2"	25
ZN-23090	3/8"-16x5-1/2"	50	ZN-23218	3/4"-10x4"	25
ZN-23092	3/8"-16x6"	50	ZN-23220	3/4"-10x4-1/2"	10
ZN-23094	7/16"-14x1"	50	ZN-23222	3/4"-10x5"	10
ZN-23096	7/16"-14x1-1/4"	50	ZN-23224	3/4"-10x5-1/2"	10
ZN-23098	7/16"-14x1-1/2"	50	ZN-23226	3/4"-10x6"	10
ZN-23100	7/16"-14x1-3/4"	50	ZN-23228	3/4"-10x6-1/2"	10
ZN-23102	7/16"-14x2"	50	ZN-23230	3/4"-10x7"	10
ZN-23104	7/16"-14x2-1/4"	50	ZN-23232	3/4"-10x8"	10
ZN-23106	7/16"-14x2-1/2"	50	ZN-23234	3/4"-10x9"	10
ZN-23108	7/16"-14x3"	50	ZN-23236	3/4"-10x10"	10
ZN-23110	7/16"-14x3-1/2"	50	ZN-23238	3/4"-10x11"	10
ZN-23112	7/16"-14x4"	50	ZN-23240	3/4"-10x12"	10
ZN-23114	7/16"-14x4-1/2"	50	ZN-23242	7/8"-9x2"	15
ZN-23116	7/16"-14x5"	50	ZN-23244	7/8"-9x2-1/2"	15
ZN-23118	7/16"-14x5-1/2"	50	ZN-23246	7/8"-9x3"	15
ZN-23120	7/16"-14x6"	50	ZN-23248	7/8"-9x3-1/2"	15
ZN-23122	1/2"-13x1"	50	ZN-23250	7/8"-9x4"	15
ZN-23124	1/2"-13x1-1/4"	50	ZN-23252	7/8"-9x4-1/2"	10
ZN-23126	1/2"-13x1-1/2"	50	ZN-23254	7/8"-9x5"	10
ZN-23128	1/2"-13x1-3/4"	50	ZN-23256	7/8"-9x5-1/2"	10
ZN-23130	1/2"-13x2"	50	ZN-23258	7/8"-9x6"	10
ZN-23132	1/2"-13x2-1/4"	50	ZN-23260	7/8"-9x6-1/2"	10
ZN-23134	1/2"-13x2-1/2"	50	ZN-23262	7/8"-9x7"	5
ZN-23136	1/2"-13x3"	25	ZN-23264	7/8"-9x8"	5

### Tornillo Hexagonal Grado 8.8 Métrico

Rosca métrica

RC: Rosca Completa

RP: Rosca Parcial

ZN-25106G y ZN-25108G con acabado galvanizado



Presentación

Código	Rosca	Medidas	MIN
ZN-25010	RC	M6-1.0 x 12 mm	100
ZN-25012	RC	M6-1.0 x 16 mm	100
ZN-25014	RC	M6-1.0 x 20 mm	100
ZN-25016	RC	M6-1.0 x 25 mm	100
ZN-25018	RC	M6-1.0 x 30 mm	100
ZN-25020	RC	M6-1.0 x 35 mm	100
ZN-25022	RC	M6-1.0 x 40 mm	100
ZN-25024	RC	M6-1.0 x 45 mm	100
ZN-25026	RC	M6-1.0 x 50 mm	100
ZN-25028	RP	M6-1.00 x 55 mm	100
ZN-25030	RP	M6-1.00 x 60 mm	100
ZN-25032	RP	M6-1.00 x 70 mm	100
ZN-25034	RP	M6-1.00 x 80 mm	100
ZN-25036	RP	M6-1.00x 90 mm	100
ZN-25038	RP	M6-1.00 x 100 mm	100
ZN-25040	RC	M8-1.25 x 16 mm	100
ZN-25042	RC	M8-1.25 x 20 mm	100
ZN-25044	RC	M8-1.25 x 25 mm	100
ZN-25046	RC	M8-1.25 x 30 mm	100
ZN-25048	RC	M8-1.25 x 35 mm	100
ZN-25050	RC	M8-1.25 x 40 mm	100
ZN-25052	RC	M8-1.25 x 45 mm	100
ZN-25054	RC	M8-1.25 x 50 mm	100
ZN-25056	RP	M8-1.25 x 55 mm	100
ZN-25058	RP	M8-1.25 x 60 mm	100
ZN-25060	RP	M8-1.25 x 65 mm	100
ZN-25062	RP	M8-1.25 x 70 mm	50
ZN-25064	RP	M8-1.25 x 80 mm	50
ZN-25066	RP	M8-1.25 x 90 mm	50
ZN-25068	RP	M8-1.25 x 100 mm	50
ZN-25070	RP	M8-1.25 x 110 mm	50
ZN-25072	RP	M8-1.25 x 120 mm	50
ZN-25074	RC	M10-1.50 x 16 mm	100
ZN-25076	RC	M10-1.50 x 20 mm	100
ZN-25078	RC	M10-1.50 x 25 mm	100
ZN-25080	RC	M10-1.50 x 30 mm	100
ZN-25082	RC	M10-1.50 x 35 mm	100
ZN-25084	RC	M10-1.50 x 40 mm	100
ZN-25086	RC	M10-1.50 x 45 mm	100
ZN-25088	RC	M10-1.50 x 50 mm	50
ZN-25090	RC	M10-1.50 x 55 mm	50
ZN-25092	RC	M10-1.50 x 60 mm	50
ZN-25094	RP	M10-1.50 x 65 mm	50
ZN-25096	RP	M10-1.50 x 70 mm	50
ZN-25098	RP	M10-1.50 x 80 mm	50
ZN-25100	RP	M10-1.50 x 90 mm	50
ZN-25102	RP	M10-1.50 x 100 mm	50
ZN-25104	RP	M10-1.50 x 110 mm	25

Código	Rosca	Medidas	MIN
ZN-25106	RP	M10-1.50 x 120 mm	25
ZN-25106G	RP	M10-1.50 x 130 mm	25
ZN-25108	RP	M10-1.50 x 140 mm	25
ZN-25108G	RP	M10-1.50 x 130 mm	25
ZN-25110	RP	M10-1.50 x 150 mm	25
ZN-25112	RP	M10-1.50 x 120 mm	25
ZN-25114	RC	M12-1.75 x 25 mm	50
ZN-25116	RC	M12-1.75 x 30 mm	50
ZN-25118	RC	M12-1.75 x 35 mm	50
ZN-25120	RC	M12-1.75 x 40 mm	50
ZN-25122	RC	M12-1.75 x 45 mm	50
ZN-25124	RC	M12-1.75 x 50 mm	50
ZN-25126	RC	M12-1.75 x 55 mm	50
ZN-25128	RC	M12-1.75 x 60 mm	50
ZN-25130	RP	M12-1.75 x 65 mm	25
ZN-25132	RP	M12-1.75 x 70 mm	25
ZN-25134	RP	M12-1.75 x 80 mm	25
ZN-25136	RP	M12-1.75 x 90 mm	25
ZN-25138	RP	M12-1.75 x 100 mm	25
ZN-25140	RP	M12-1.75 x 110 mm	25
ZN-25142	RP	M12-1.75 x 120 mm	25
ZN-25144	RP	M12-1.75 x 130 mm	25
ZN-25146	RP	M12-1.75 x 140 mm	25
ZN-25148	RP	M12-1.75 x 150 mm	25
ZN-25150	RC	M16-2.0 x 40 mm	25
ZN-25152	RC	M16-2.0 x 45 mm	25
ZN-25154	RC	M16-2.0 x 50 mm	25
ZN-25156	RC	M16-2.0 x 55 mm	25
ZN-25158	RC	M16-2.0 x 60 mm	25
ZN-25160	RP	M16-2.00 x 70 mm	25
ZN-25162	RP	M16-2.00 x 80 mm	20
ZN-25164	RP	M16-2.00 x 90 mm	20
ZN-25166	RP	M16-2.00 x 100 mm	20
ZN-25168	RP	M16-2.00 x 110 mm	20
ZN-25170	RP	M16-2.00 x 120 mm	20
ZN-25172	RP	M16-2.00x 130 mm	15
ZN-25174	RP	M16-2.00x 140 mm	15
ZN-25176	RP	M16-2.00 x 150 mm	15
ZN-25178	RP	M20-2.50 x 70 mm	15
ZN-25180	RP	M20-2.50 x 80 mm	15
ZN-25182	RP	M20-2.50 x 90 mm	15
ZN-25184	RP	M20-2.50 x 100 mm	10
ZN-25186	RP	M20-2.50 x 120 mm	10
ZN-25188	RP	M20-2.50 x 130 mm	10
ZN-25190	RP	M20-2.50 x 140 mm	10
ZN-25192	RP	M20-2.50 x 150 mm	5
ZN-25194	RP	M20-2.50 x 160 mm	5

### Tornillo Tipo Coche Galvanizado Fraccional

Rosca fraccional

Cabeza tipo coche

Acabado galvanizado



Presentación

Código	Medidas	MIN
ZN-05010	1/4"-20 x 1/2"	100
ZN-05012	1/4"-20 x 3/4"	100
ZN-05014	1/4"-20 x 1"	100
ZN-05016	1/4"-20 x 1-1/4"	100
ZN-05018	1/4"-20 x 1-1/2"	100
ZN-05020	1/4"-20 x 2"	100
ZN-05022	1/4"-20 x 2-1/2"	100
ZN-05024	1/4"-20 x 3"	100
ZN-05025	5/16"-18 x 1/2"	100
ZN-05026	5/16"-18 x 3/4"	100
ZN-05028	5/16"-18 x 1"	100
ZN-05030	5/16"-18 x 1-1/4"	100
ZN-05032	5/16"-18 x 1-1/2"	100
ZN-05034	5/16"-18 x 2"	100
ZN-05036	5/16"-18 x 2-1/2"	50
ZN-05038	5/16"-18 x 3"	50
ZN-05040	3/8"-16 x 3/4"	100
ZN-05042	3/8"-16 x 1"	100

Código	Medidas	MIN
ZN-05044	3/8"-16 x 1-1/4"	100
ZN-05046	3/8"-16 x 1-1/2"	100
ZN-05048	3/8"-16 x 2"	50
ZN-05050	3/8"-16 x 2-1/2"	50
ZN-05052	3/8"-16 x 3"	50
ZN-05054	3/8"-16 x 3-1/2"	50
ZN-05056	3/8"-16 x 4"	50
ZN-05058	1/2"-13 x 1"	50
ZN-05060	1/2"-13 x 1-1/4"	50
ZN-05062	1/2"-13 x 1-1/2"	50
ZN-05064	1/2"-13 x 2"	50
ZN-05066	1/2"-13 x 2-1/2"	25
ZN-05068	1/2"-13 x 3"	25
ZN-05070	1/2"-13 x 3-1/2"	25
ZN-05072	1/2"-13 x 4"	25
ZN-05074	1/2"-13 x 4-1/2"	20
ZN-05076	1/2"-13 x 5"	20
ZN-05078	1/2"-13 x 6"	20

**Tornillo Allen Cilíndrico Fraccional**

Rosca fraccional



**Tornillo Socket Grado 12.9 Cilíndrico Métrico**

Rosca métrica



Presentación



Presentación

Código	Medidas	MIN
ZN-11200	4-40 x 1/4"	100
ZN-11202	4-40 x 3/8"	100
ZN-11204	4-40 x 1/2"	100
ZN-11206	4-40 x 5/8"	100
ZN-11208	4-40 x 3/4"	100
ZN-11210	4-40 x 1"	100
ZN-11212	5-40 x 1/4"	100
ZN-11214	5-40 x 3/8"	100
ZN-11216	5-40 x 1/2"	100
ZN-11218	5-40 x 5/8"	100
ZN-11220	5-40 x 3/4"	100
ZN-11222	5-40 x 1"	100
ZN-11224	5-40 x 1-1/4"	100
ZN-11226	5-40 x 1-1/2"	100
ZN-11228	5-40 x 2"	100
ZN-11230	6-32 x 1/4"	100
ZN-11232	6-32 x 3/8"	100
ZN-11234	6-32 x 1/2"	100
ZN-11236	6-32 x 5/8"	100
ZN-11238	6-32 x 3/4"	100
ZN-11240	6-32 x 1"	100
ZN-11242	6-32 x 1-1/4"	100
ZN-11244	6-32 x 1-1/2"	100
ZN-11246	6-32 x 2"	100
ZN-11248	8-32 x 1/4"	100
ZN-11250	8-32 x 3/8"	100
ZN-11252	8-32 x 1/2"	100
ZN-11254	8-32 x 3/4"	100
ZN-11256	8-32 x 1"	100
ZN-11258	8-32 x 1-1/4"	100
ZN-11260	8-32 x 1-1/2"	100
ZN-11262	8-32 x 2"	100
ZN-11264	8-32 x 2-1/2"	100
ZN-11266	8-32 x 3"	100
ZN-11268	10-24 x 3/8"	100
ZN-11270	10-24 x 1/2"	100
ZN-11272	10-24 x 5/8"	100
ZN-11274	10-24 x 3/4"	100
ZN-11276	10-24 x 1"	100
ZN-11278	10-24 x 1-1/4"	100
ZN-11280	10-24 x 1-1/2"	100
ZN-11281	10-24 x 1-3/4"	100
ZN-11282	10-24 x 2"	100
ZN-11283	10-24 x 2-1/4"	50
ZN-11284	10-24 x 2-1/2"	50
ZN-11286	10-24 x 3"	50
ZN-11288	10-24 x 3-1/2"	100
ZN-11008	1/4"-20 x 3/8"	100
ZN-11010	1/4"-20 x 1/2"	100
ZN-11012	1/4"-20 x 5/8"	100
ZN-11014	1/4"-20 x 3/4"	100
ZN-11015	1/4"-20 x 7/8"	100
ZN-11016	1/4"-20 x 1"	100
ZN-11018	1/4"-20 x 1-1/4"	100
ZN-11020	1/4"-20 x 1-1/2"	100
ZN-11022	1/4"-20 x 1-3/4"	100
ZN-11024	1/4"-20 x 2"	100
ZN-11025	1/4"-20 x 2-1/4"	100
ZN-11026	1/4"-20 x 2-1/2"	50
ZN-11027	1/4"-20 x 2-3/4"	100
ZN-11028	1/4"-20 x 3"	50
ZN-11030	1/4"-20 x 3-1/2"	50
ZN-11032	1/4"-20 x 4"	50
ZN-11033	1/4"-20 x 4-1/2"	50

Código	Medidas	MIN
ZN-11033-02	1/4"-20 x 5"	50
ZN-11033-04	1/4"-20 x 5-1/2"	50
ZN-11033-06	1/4"-20 x 6"	50
ZN-11034	5/16"-18 x 1/2"	100
ZN-11036	5/16"-18 x 5/8"	100
ZN-11038	5/16"-18 x 3/4"	100
ZN-11039	5/16"-18 x 7/8"	100
ZN-11040	5/16"-18 x 1"	100
ZN-11042	5/16"-18 x 1-1/4"	100
ZN-11044	5/16"-18 x 1-1/2"	100
ZN-11045	5/16"-18 x 1-3/4"	100
ZN-11046	5/16"-18 x 2"	100
ZN-11047	5/16"-18 x 2-1/4"	100
ZN-11048	5/16"-18 x 2-1/2"	50
ZN-11049	5/16"-18 x 2-3/4"	100
ZN-11050	5/16"-18 x 3"	50
ZN-11052	5/16"-18 x 3-1/2"	50
ZN-11054	5/16"-18 x 4"	50
ZN-11055	5/16"-18 x 4-1/2"	50
ZN-11055-02	5/16"-18 x 5"	50
ZN-11055-04	5/16"-18 x 5-1/2"	50
ZN-11055-06	5/16"-18 x 6"	50
ZN-11056	3/8"-16 x 1/2"	100
ZN-11058	3/8"-16 x 5/8"	100
ZN-11060	3/8"-16 x 3/4"	100
ZN-11061	3/8"-16 x 7/8"	100
ZN-11062	3/8"-16 x 1"	100
ZN-11064	3/8"-16 x 1-1/4"	100
ZN-11066	3/8"-16 x 1-1/2"	100
ZN-11067	3/8"-16 x 1-3/4"	100
ZN-11068	3/8"-16 x 2"	100
ZN-11069	3/8"-16 x 2-1/4"	100
ZN-11070	3/8"-16 x 2-1/2"	50
ZN-11071	3/8"-16 x 2-3/4"	100
ZN-11072	3/8"-16 x 3"	50
ZN-11074	3/8"-16 x 3-1/2"	50
ZN-11076	3/8"-16 x 4"	50
ZN-11077	3/8"-16 x 4-1/2"	50
ZN-11078	3/8"-16 x 5"	50
ZN-11079	3/8"-16 x 5-1/2"	50
ZN-11080	3/8"-16 x 6"	200
ZN-11081	7/16"-14 x 3/4"	100
ZN-11081-02	7/16"-14 x 1"	100
ZN-11081-04	7/16"-14 x 1-1/4"	100
ZN-11081-06	7/16"-14 x 1-1/2"	100
ZN-11081-08	7/16"-14 x 1-3/4"	100
ZN-11081-10	7/16"-14 x 2"	100
ZN-11081-12	7/16"-14 x 2-1/2"	100
ZN-11081-14	7/16"-14 x 3"	50
ZN-11081-16	7/16"-14 x 3-1/2"	50
ZN-11081-18	7/16"-14 x 4"	50
ZN-11082	1/2"-13 x 1/2"	50
ZN-11084	1/2"-13 x 3/4"	50
ZN-11086	1/2"-13 x 1"	50
ZN-11088	1/2"-13 x 1-1/4"	50
ZN-11090	1/2"-13 x 1-1/2"	50
ZN-11091	1/2"-13 x 1-3/4"	50
ZN-11092	1/2"-13 x 2"	50
ZN-11094	1/2"-13 x 2-1/4"	50
ZN-11096	1/2"-13 x 2-1/2"	25
ZN-11098	1/2"-13 x 2-3/4"	25
ZN-11100	1/2"-13 x 3"	25
ZN-11102	1/2"-13 x 3-1/2"	25
ZN-11104	1/2"-13 x 4"	25

Código	Medidas	MIN
ZN-11106	1/2"-13 x 4-1/2"	25
ZN-11108	1/2"-13 x 5"	25
ZN-11110	1/2"-13 x 5-1/2"	25
ZN-11112	1/2"-13 x 6"	25
ZN-11113	1/2"-13 x 7"	25
ZN-11114	5/8"-11 x 1"	50
ZN-11116	5/8"-11 x 1-1/4"	50
ZN-11118	5/8"-11 x 1-1/2"	25
ZN-11119	5/8"-11 x 1-3/4"	50
ZN-11120	5/8"-11 x 2"	25
ZN-11122	5/8"-11 x 2-1/4"	25
ZN-11124	5/8"-11 x 2-1/2"	25
ZN-11126	5/8"-11 x 2-3/4"	25
ZN-11128	5/8"-11 x 3"	25
ZN-11130	5/8"-11 x 3-1/2"	20
ZN-11132	5/8"-11 x 4"	20
ZN-11134	5/8"-11 x 4-1/2"	20
ZN-11136	5/8"-11 x 5"	15
ZN-11138	5/8"-11 x 5-1/2"	15
ZN-11140	5/8"-11 x 6"	15
ZN-11142	3/4"-10 x 1-1/4"	25
ZN-11143	3/4"-10 x 1-3/4"	50
ZN-11144	3/4"-10 x 1-1/2"	25
ZN-11146	3/4"-10 x 2"	20
ZN-11148	3/4"-10 x 2-1/4"	20
ZN-11150	3/4"-10 x 2-1/2"	15
ZN-11152	3/4"-10 x 2-3/4"	15
ZN-11154	3/4"-10 x 3"	15
ZN-11156	3/4"-10 x 3-1/2"	10
ZN-11158	3/4"-10 x 4"	10
ZN-11160	3/4"-10 x 4-1/2"	10
ZN-11162	3/4"-10 x 5"	10
ZN-11164	3/4"-10 x 5-1/2"	10
ZN-11166	3/4"-10 x 6"	10
ZN-11168	7/8"-9 x 2-1/2"	5
ZN-11170	7/8"-9 x 3"	5
ZN-11172	7/8"-9 x 3-1/2"	5
ZN-11174	7/8"-9 x 4"	5
ZN-11176	7/8"-9 x 4-1/2"	5
ZN-11178	7/8"-9 x 5"	5
ZN-11180	7/8"-9 x 5-1/2"	5
ZN-11182	7/8"-9 x 6"	5
ZN-11183	1"-8 x 2"	10
ZN-11184	1"-8 x 2-1/2"	1
ZN-11186	1"-8 x 3"	1
ZN-11188	1"-8 x 3-1/2"	1
ZN-11190	1"-8 x 4"	1
ZN-11192	1"-8 x 4-1/2"	1
ZN-11194	1"-8 x 5"	1
ZN-11196	1"-8 x 5-1/2"	1
ZN-11198	1"-8 x 6"	1
ZN-11198-05	1-1/4"-7 x 3-1/2"	1
ZN-11198-10	1-1/4"-7 x 4"	1
ZN-11198-15	1-1/4"-7 x 4-1/2"	1
ZN-11198-20	1-1/4"-7 x 5"	1
ZN-11198-25	1-1/4"-7 x 5-1/2"	1
ZN-11198-30	1-1/4"-7 x 6"	1
ZN-11198-35	1-1/4"-7 x 7"	1
ZN-11198-40	1-1/4"-7 x 8"	1
ZN-11198-45	1-1/4"-7 x 10"	1
ZN-11198-50	1-1/4"-7 x 12"	1

Código	Medidas	MIN
ZN-11410	M3-0.50x8 mm	100
ZN-11412	M3-0.50x10 mm	100
ZN-11414	M3-0.50x12 mm	100
ZN-11416	M3-0.50x16 mm	100
ZN-11418	M3-0.50x20 mm	100
ZN-11420	M3-0.50x25 mm	100
ZN-11422	M3-0.50x30 mm	100
ZN-11424	M3-0.50x35 mm	100
ZN-11426	M3-0.50x40 mm	100
ZN-11428	M4-0.70x8 mm	100
ZN-11430	M4-0.70 x10 mm	100
ZN-11432	M4-0.70 x12 mm	100
ZN-11434	M4-0.70x16 mm	100
ZN-11436	M4-0.70x20 mm	100
ZN-11438	M4-0.70x25 mm	100
ZN-11440	M4-0.70x30 mm	100
ZN-11442	M4-0.70x35 mm	100
ZN-11444	M4-0.70x40 mm	100
ZN-11446	M4-0.70x45 mm	100
ZN-11448	M4-0.70x50 mm	100
ZN-11450	M5-0.80x10 mm	100
ZN-11452	M5-0.80x12 mm	100
ZN-11454	M5-0.80x16 mm	100
ZN-11456	M5-0.80x20 mm	100
ZN-11458	M5-0.80x25 mm	100
ZN-11460	M5-0.80x30 mm	100
ZN-11462	M5-0.80x35 mm	100
ZN-11464	M5-0.80x40 mm	100
ZN-11466	M5-0.80x50 mm	100
ZN-11468	M6-1.0x10 mm	100
ZN-11470	M6-1.0x12 mm	100
ZN-11472	M6-1.0x16 mm	100
ZN-11474	M6-1.0x20 mm	100
ZN-11476	M6-1.0x25 mm	100
ZN-11478	M6-1.0x30 mm	100
ZN-11480	M6-1.0x35 mm	100
ZN-11482	M6-1.0x40 mm	100
ZN-11484	M6-1.0x45 mm	100
ZN-11486	M6-1.0x50 mm	100
ZN-11488	M6-1.0x60 mm	100
ZN-11490	M6-1.0x65 mm	100
ZN-11492	M6-1.0x70 mm	100
ZN-11494	M8-1.25x20 mm	100
ZN-11496	M8-1.25x25 mm	100
ZN-11498	M8-1.25x30 mm	100
ZN-11500	M8-1.25x35 mm	100
ZN-11502	M8-1.25x40 mm	100
ZN-11504	M8-1.25x45 mm	100
ZN-11506	M8-1.25x50 mm	100
ZN-11508	M8-1.25x55 mm	100
ZN-11510	M8-1.25x60 mm	100
ZN-11512	M8-1.25x70 mm	100
ZN-11514	M8-1.25x80 mm	100
ZN-11516	M8-1.25x90 mm	100
ZN-11518	M8-1.25x100 mm	100
ZN-11520	M10-1.5x20 mm	100
ZN-11522	M10-1.5x25 mm	100
ZN-11524	M10-1.5x30 mm	100
ZN-11526	M10-1.5x35 mm	100

Código	Medidas	MIN
ZN-11528	M10-1.5x40 mm	100
ZN-11530	M10-1.5x45 mm	100
ZN-11532	M10-1.5x50 mm	50
ZN-11534	M10-1.5x55 mm	50
ZN-11536	M10-1.5x60 mm	50
ZN-11538	M10-1.5x70 mm	50
ZN-11540	M10-1.5x75 mm	50
ZN-11542	M10-1.5x80 mm	50
ZN-11544	M10-1.5x90 mm	50
ZN-11546	M10-1.5x100 mm	50
ZN-11548	M12-1.75x25 mm	50
ZN-11550	M12-1.75x30 mm	50
ZN-11552	M12-1.75x35 mm	50
ZN-11554	M12-1.75x40 mm	50
ZN-11556	M12-1.75x45 mm	50
ZN-11558	M12-1.75x50 mm	50
ZN-11560	M12-1.75x60 mm	50
ZN-11562	M12-1.75x90 mm	50
ZN-11564	M12-1.75x70 mm	50
ZN-11566	M12-1.75x80 mm	50
ZN-11568	M12-1.75x100 mm	25
ZN-11570	M16-2.0x30 mm	25
ZN-11572	M16-2.0x35 mm	25
ZN-11574	M16-2.0x40 mm	25
ZN-11576	M16-2.0x45 mm	25
ZN-11578	M16-2.0x50 mm	25
ZN-11580	M16-2.0x60 mm	25
ZN-11582	M16-2.0x65 mm	25
ZN-11584	M16-2.0x70 mm	25
ZN-11586	M16-2.0x80 mm	20
ZN-11588	M16-2.0x90 mm	20
ZN-11590	M16-2.0x100 mm	20
ZN-11600	M20-2.50x30mm	5
ZN-11605	M20-2.50x	

**Tornillo Allen Cabeza Plana Fraccional**

Rosca fraccional

**DISPONIBLE:**

En acero inoxidable  
VER PÁG. 385



Presentación

Código	Medidas	MIN
ZN-13010	4-40 x 3/8"	100
ZN-13012	4-40 x 1/2"	100
ZN-13014	4-40 x 5/8"	100
ZN-13016	4-40 x 3/4"	100
ZN-13018	4-40 x 1"	100
ZN-13020	5-40 x 3/8"	100
ZN-13022	5-40 x 1/2"	100
ZN-13024	5-40 x 5/8"	100
ZN-13026	5-40 x 3/4"	100
ZN-13028	5-40 x 1"	100
ZN-13030	6-32 x 3/8"	100
ZN-13032	6-32 x 1/2"	100
ZN-13034	6-32 x 5/8"	100
ZN-13036	6-32 x 3/4"	100
ZN-13038	6-32 x 1"	100
ZN-13040	6-32 x 1-1/4"	100
ZN-13042	8-32 x 3/8"	100
ZN-13044	8-32 x 1/2"	100
ZN-13046	8-32 x 5/8"	100
ZN-13048	8-32 x 3/4"	100
ZN-13050	8-32 x 1"	100
ZN-13052	8-32 x 1-1/4"	100
ZN-13054	8-32 x 1-1/2"	100
ZN-13056	10-24 x 3/8"	100
ZN-13058	10-24 x 1/2"	100
ZN-13060	10-24 x 5/8"	100
ZN-13062	10-24 x 3/4"	100
ZN-13064	10-24 x 1-1/4"	100
ZN-13066	10-24 x 1-1/2"	100
ZN-13068	10-24 x 2"	100
ZN-13070	10-24 x 2-1/2"	100
ZN-13072	10-32 x 1/2"	100
ZN-13074	1/4"-20 x 1/2"	100
ZN-13076	1/4"-20 x 5/8"	100
ZN-13078	1/4"-20 x 3/4"	100
ZN-13080	1/4"-20 x 1"	100
ZN-13082	1/4"-20 x 1-1/4"	100
ZN-13084	1/4"-20 x 1-1/2"	100
ZN-13086	1/4"-20 x 1-3/4"	100
ZN-13088	5/16"-18 x 1/2"	100
ZN-13090	5/16"-18 x 3/4"	100
ZN-13092	5/16"-18 x 1"	100
ZN-13094	5/16"-18 x 1-1/4"	100
ZN-13096	5/16"-18 x 1-1/2"	100
ZN-13098	5/16"-18 x 2"	100
ZN-13100	5/16"-18 x 2-1/2"	100
ZN-13102	5/16"-18 x 3"	100
ZN-13104	3/8"-16 x 1"	100
ZN-13106	3/8"-16 x 1-1/4"	100
ZN-13108	3/8"-16 x 1-1/2"	100
ZN-13110	3/8"-16 x 1-3/4"	100
ZN-13112	3/8"-16 x 2"	100
ZN-13114	3/8"-16 x 2-1/4"	50
ZN-13116	3/8"-16 x 2-1/2"	50
ZN-13118	3/8"-16 x 3"	50
ZN-13120	3/8"-16 x 3-1/2"	50
ZN-13122	3/8"-16 x 4"	50
ZN-13124	1/2"-13 x 1"	50
ZN-13126	1/2"-13 x 1-1/4"	50
ZN-13128	1/2"-13 x 1-1/2"	50
ZN-13130	1/2"-13 x 1-3/4"	50
ZN-13132	1/2"-13 x 2-1/4"	50
ZN-13134	1/2"-13 x 3"	50
ZN-13136	1/2"-13 x 3-1/2"	25
ZN-13138	5/8"-11 x 1-1/4"	25
ZN-13140	5/8"-11 x 1-1/2"	25
ZN-13142	5/8"-11 x 1-3/4"	25
ZN-13144	5/8"-11 x 2-1/4"	25
ZN-13146	5/8"-11 x 3"	25
ZN-13148	5/8"-11 x 3-1/2"	25
ZN-13150	5/8"-11 x 4"	20
ZN-13152	3/4"-10 x 2-1/2"	20
ZN-13154	3/4"-10 x 3"	20
ZN-13156	3/4"-10 x 3-1/2"	10
ZN-13158	3/4"-10 x 4"	10

**Tornillo Allen Cabeza Plana Métrico**

Rosca métrica

**DISPONIBLE:**

En acero inoxidable  
VER PÁG. 385



Presentación

Código	Medidas	MIN
ZN-13410	M3-0.50 x 10 mm	100
ZN-13412	M3-0.50 x 12 mm	100
ZN-13414	M3-0.50 x 16 mm	100
ZN-13416	M3-0.50 x 20 mm	100
ZN-13418	M4-0.70 x 8 mm	100
ZN-13420	M4-0.70 x 10 mm	100
ZN-13422	M4-0.70 x 12 mm	100
ZN-13424	M4-0.70 x 16 mm	100
ZN-13426	M4-0.70 x 20 mm	100
ZN-13428	M4-0.70 x 25 mm	100
ZN-13430	M4-0.70 x 35 mm	100
ZN-13432	M5-0.80 x 8 mm	100
ZN-13434	M5-0.80 x 10 mm	100
ZN-13436	M5-0.80 x 12 mm	100
ZN-13438	M5-0.80 x 16 mm	100
ZN-13440	M5-0.80 x 20 mm	100
ZN-13442	M5-0.80 x 25 mm	100
ZN-13444	M5-0.80 x 30 mm	100
ZN-13446	M5-0.80 x 35 mm	100
ZN-13448	M5-0.80 x 40 mm	100
ZN-13450	M5-0.80 x 50 mm	100
ZN-13452	M6-1 x 10 mm	100
ZN-13454	M6-1 x 12 mm	100
ZN-13456	M6-1 x 16 mm	100
ZN-13458	M6-1 x 20 mm	100
ZN-13460	M6-1 x 25 mm	100
ZN-13462	M6-1 x 30 mm	100
ZN-13464	M6-1 x 35 mm	100
ZN-13466	M6-1 x 40 mm	100
ZN-13468	M6-1 x 50 mm	100
ZN-13470	M6-1 x 55 mm	100
ZN-13472	M6-1 x 60 mm	100
ZN-13474	M8-1.25 x 16 mm	100
ZN-13476	M8-1.25 x 20 mm	100
ZN-13478	M8-1.25 x 25 mm	100
ZN-13480	M8-1.25 x 30 mm	100
ZN-13482	M8-1.25 x 35 mm	100
ZN-13484	M8-1.25 x 40 mm	100
ZN-13486	M8-1.25 x 45 mm	100
ZN-13488	M8-1.25 x 50 mm	100
ZN-13490	M8-1.25 x 55 mm	100
ZN-13492	M8-1.25 x 60 mm	100
ZN-13494	M10-1.5 x 20 mm	100
ZN-13496	M10-1.5 x 30 mm	100
ZN-13498	M10-1.5 x 35 mm	100
ZN-13500	M10-1.5 x 40 mm	100
ZN-13502	M10-1.5 x 45 mm	50
ZN-13504	M10-1.5 x 50 mm	50
ZN-13506	M10-1.5 x 55 mm	50
ZN-13508	M10-1.5 x 60 mm	50
ZN-13510	M12-1.75 x 25 mm	50
ZN-13512	M12-1.75 x 30 mm	50
ZN-13514	M12-1.75 x 35 mm	50
ZN-13516	M12-1.75 x 40 mm	50
ZN-13518	M12-1.75 x 45 mm	50
ZN-13520	M12-1.75 x 50 mm	50
ZN-13522	M12-1.75 x 55 mm	25
ZN-13524	M12-1.75 x 60 mm	25
ZN-13526	M12-1.75 x 70 mm	25

**Tornillo Allen Cabeza de Botón Fraccional**

Rosca fraccional

**DISPONIBLE:**

En acero inoxidable  
VER PÁG. 385



Presentación

Código	Medidas	MIN
ZN-15010	6-32 x 1/4"	100
ZN-15012	6-32 x 3/8"	100
ZN-15014	6-32 x 1/2"	100
ZN-15016	6-32 x 5/8"	100
ZN-15018	6-32 x 3/4"	100
ZN-15020	6-32 x 1"	100
ZN-15022	8-32 x 3/8"	100
ZN-15024	8-32 x 1/2"	100
ZN-15026	8-32 x 3/4"	100
ZN-15028	8-32 x 1"	100
ZN-15030	10-24 x 3/8"	100
ZN-15032	10-24 x 1/2"	100
ZN-15034	10-24 x 5/8"	100
ZN-15036	10-24 x 3/4"	100
ZN-15038	10-24 x 1"	100
ZN-15040	10-24 x 1-1/4"	100
ZN-15042	10-24 x 1-1/2"	100
ZN-15044	10-24 x 2"	100
ZN-15046	10-32 x 3/4"	100
ZN-15048	1/4"-20 x 3/8"	100
ZN-15050	1/4"-20 x 1/2"	100
ZN-15052	1/4"-20 x 5/8"	100
ZN-15054	1/4"-20 x 3/4"	100
ZN-15056	1/4"-20 x 7/8"	100
ZN-15058	1/4"-20 x 1"	100
ZN-15060	1/4"-20 x 1-1/2"	100
ZN-15062	1/4"-20 x 2"	100

Código	Medidas	MIN
ZN-15064	5/16"-18 x 1/2"	100
ZN-15066	5/16"-18 x 5/8"	100
ZN-15068	5/16"-18 x 3/4"	100
ZN-15070	5/16"-18 x 1"	100
ZN-15072	5/16"-18 x 1-1/4"	100
ZN-15074	5/16"-18 x 1-1/2"	100
ZN-15076	5/16"-18 x 1-3/4"	100
ZN-15078	5/16"-18 x 2"	100
ZN-15080	5/16"-18 x 2-1/2"	50
ZN-15082	5/16"-18 x 3"	50
ZN-15084	3/8"-16 x 1/2"	100
ZN-15086	3/8"-16 x 3/4"	100
ZN-15088	3/8"-16 x 1"	100
ZN-15090	3/8"-16 x 1-1/4"	100
ZN-15092	3/8"-16 x 1-1/2"	50
ZN-15094	3/8"-16 x 2"	50
ZN-15096	3/8"-16 x 2-1/2"	50
ZN-15098	3/8"-16 x 3"	50
ZN-15100	3/8"-16 x 3-1/2"	25
ZN-15102	3/8"-16 x 4"	25
ZN-15104	1/2"-13 x 1"	25
ZN-15106	1/2"-13 x 1-1/2"	25
ZN-15108	1/2"-13 x 2"	25
ZN-15110	1/2"-13 x 3"	25
ZN-15112	1/2"-13 x 3-1/2"	25
ZN-15114	1/2"-13 x 4"	25

**Tornillo Allen Cabeza de Botón Métrico**

Rosca métrica

**DISPONIBLE:**

En acero inoxidable  
VER PÁG. 385



Presentación

Código	Medidas	MIN
ZN-15410	M4-0.70 X 6 mm	100
ZN-15412	M4-0.70 X 8 mm	100
ZN-15414	M4-0.70 X 10 mm	100
ZN-15416	M4-0.70 X 12 mm	100
ZN-15418	M4-0.70 X 16 mm	100
ZN-15420	M4-0.70 X 20 mm	100
ZN-15422	M4-0.70 X 25 mm	100
ZN-15424	M5-0.80 X 8 mm	100
ZN-15426	M5-0.80 X 12 mm	100
ZN-15428	M5-0.80 X 16 mm	100
ZN-15430	M5-0.80 X 20 mm	100
ZN-15432	M5-0.80 X 25 mm	100
ZN-15434	M5-0.80 X 30 mm	100
ZN-15436	M6-1.0 X 10 mm	100
ZN-15438	M6-1.0 X 12 mm	100
ZN-15440	M6-1.0 X 16 mm	100
ZN-15442	M6-1.0 X 20 mm	100
ZN-15444	M6-1.0 X 25 mm	100
ZN-15446	M6-1.0 X 30 mm	100
ZN-15448	M6-1.0 X 35 mm	100
ZN-15450	M6-1.0 X 40 mm	100
ZN-15452	M8-1.25 X 16 mm	100

Código	Medidas	MIN
ZN-15454	M8-1.25 X 20 mm	100
ZN-15456	M8-1.25 X 25 mm	100
ZN-15458	M8-1.25 X 30 mm	100
ZN-15460	M8-1.25 X 35 mm	100
ZN-15462	M8-1.25 X 40 mm	100
ZN-15464	M8-1.25 X 45 mm	100
ZN-15466	M8-1.25 X 50 mm	100
ZN-15468	M10-1.5 X 20 mm	100
ZN-15470	M10-1.5 X 25 mm	50
ZN-15472	M10-1.5 X 30 mm	50
ZN-15474	M10-1.5 X 35 mm	50
ZN-15476	M10-1.5 X 40 mm	50
ZN-15478	M10-1.5 X 45 mm	50
ZN-15480	M10-1.5 X 50 mm	50
ZN-15482	M10-1.5 X 60 mm	25
ZN-15484	M12-1.75 X 25 mm	25
ZN-15486	M12-1.75 X 30 mm	25
ZN-15488	M12-1.75 X 35 mm	25
ZN-15490	M12-1.75 X 40 mm	25
ZN-15492	M12-1.75 X 45 mm	25
ZN-15494	M12-1.75 X 50 mm	25
ZN-15496	M12-1.75 X 60 mm	25



### Tornillo Torx Cabeza Plana Punta T-23 Negro Fraccional

Rosca fraccional



Código	Medidas
ZN-27210	1/4" x 1-1/2"
ZN-27212	1/4" x 2"
ZN-27214	1/4" x 2-1/2"
ZN-27216	1/4" x 3"
ZN-27218	5/16" x 1-1/2"
ZN-27220	5/16" x 2"
ZN-27222	5/16" x 2-1/2"
ZN-27224	5/16" x 3"

Presentación  
MIN: 200

### Tornillo Torx Cabeza Plana Punta T-23 Galvanizado Fraccional

Rosca fraccional



Código	Medidas
ZN-27310	1/4" x 1-1/2"
ZN-27312	1/4" x 2"
ZN-27314	1/4" x 2-1/2"

Presentación  
MIN: 200

### Tornillo Torx Cabeza Plana F Negro Fraccional

Rosca fraccional



Código	Medidas	Código	Medidas
ZN-27010	1/4" x 1"	ZN-27022	1/4" x 4"
ZN-27012	1/4" x 1-1/4"	ZN-27024	1/4" x 5"
ZN-27014	1/4" x 1-1/2"	ZN-27026	5/16" x 1-1/2"
ZN-27016	1/4" x 2"	ZN-27028	5/16" x 2"
ZN-27018	1/4" x 2-1/2"	ZN-27030	5/16" x 2-1/2"
ZN-27020	1/4" x 3"	ZN-27032	5/16" x 3"

Presentación  
MIN: 200

### Tornillo Torx Cabeza Plana F Galvanizado Fraccional

Rosca fraccional



Código	Medidas
ZN-27110	1/4" x 1-1/2"
ZN-27112	1/4" x 2"
ZN-27114	1/4" x 2-1/2"
ZN-27116	1/4" x 3"

Presentación  
MIN: 200

### Tornillo Estufa Cabeza Combinada Fraccional

Rosca fraccional



Código	Medidas
ZN-07010	5/32" x 1/2"
ZN-07012	5/32" x 3/4"
ZN-07014	5/32" x 1"
ZN-07016	5/32" x 1-1/4"
ZN-07018	5/32" x 1-1/2"
ZN-07020	5/32" x 2"
ZN-07022	3/16" x 1/2"
ZN-07024	3/16" x 3/4"
ZN-07026	3/16" x 1"

Código	Medidas
ZN-07028	3/16" x 1-1/4"
ZN-07030	3/16" x 1-1/2"
ZN-07032	3/16" x 2"
ZN-07034	3/16" x 2-1/2"
ZN-07036	3/16" x 3"
ZN-07038	1/4" x 3/4"
ZN-07040	1/4" x 1"
ZN-07042	1/4" x 1-1/2"
ZN-07044	1/4" x 2"
ZN-07046	1/4" x 2-1/2"

Código	Medidas
ZN-07048	1/4" x 3"
ZN-07050	1/4" x 3-1/2"
ZN-07052	1/4" x 4"
ZN-07054	5/16" x 1"
ZN-07056	5/16" x 1-1/2"
ZN-07058	5/16" x 2"
ZN-07060	5/16" x 2-1/2"
ZN-07062	5/16" x 3"
ZN-07064	5/16" x 3-1/2"
ZN-07066	5/16" x 4"

Presentación  
MIN: 100

### Tornillo de Guía Fraccional

Rosca fraccional



Código	Medidas	MIN	Código	Medidas	MIN
ZN-17010	1/4" (10-24) x 1/4"	50	ZN-17084	3/8" (5/16"-18) x 3"	25
ZN-17012	1/4" (10-24) x 5/16"	50	ZN-17086	1/2" (3/8"-16) x 3/8"	20
ZN-17014	1/4" (10-24) x 3/8"	50	ZN-17088	1/2" (3/8"-16) x 1/2"	20
ZN-17016	1/4" (10-24) x 1/2"	50	ZN-17090	1/2" (3/8"-16) x 5/8"	20
ZN-17018	1/4" (10-24) x 5/8"	50	ZN-17092	1/2" (3/8"-16) x 3/4"	20
ZN-17020	1/4" (10-24) x 3/4"	50	ZN-17094	1/2" (3/8"-16) x 7/8"	20
ZN-17022	1/4" (10-24) x 7/8"	50	ZN-17096	1/2" (3/8"-16) x 1"	20
ZN-17024	1/4" (10-24) x 1"	50	ZN-17098	1/2" (3/8"-16) x 1-1/4"	20
ZN-17026	1/4" (10-24) x 1-1/4"	50	ZN-17100	1/2" (3/8"-16) x 1-1/2"	20
ZN-17028	1/4" (10-24) x 1-1/2"	50	ZN-17102	1/2" (3/8"-16) x 1-3/4"	20
ZN-17030	1/4" (10-24) x 1-3/4"	50	ZN-17104	1/2" (3/8"-16) x 2"	20
ZN-17032	1/4" (10-24) x 2"	50	ZN-17106	1/2" (3/8"-16) x 2-1/4"	20
ZN-17034	5/16" (1/4"-20) x 1/4"	50	ZN-17108	1/2" (3/8"-16) x 2-1/2"	20
ZN-17036	5/16" (1/4"-20) x 5/16"	50	ZN-17110	1/2" (3/8"-16) x 2-3/4"	20
ZN-17038	5/16" (1/4"-20) x 3/8"	50	ZN-17112	1/2" (3/8"-16) x 3"	20
ZN-17040	5/16" (1/4"-20) x 1/2"	50	ZN-17114	1/2" (3/8"-16) x 3-1/4"	20
ZN-17042	5/16" (1/4"-20) x 5/8"	50	ZN-17116	1/2" (3/8"-16) x 3-1/2"	20
ZN-17044	5/16" (1/4"-20) x 3/4"	50	ZN-17118	1/2" (3/8"-16) x 3-3/4"	20
ZN-17046	5/16" (1/4"-20) x 7/8"	50	ZN-17120	1/2" (3/8"-16) x 4"	20
ZN-17048	5/16" (1/4"-20) x 1"	50	ZN-17122	5/8" (1/2"-13) x 1/2"	15
ZN-17050	5/16" (1/4"-20) x 1-1/4"	50	ZN-17124	5/8" (1/2"-13) x 5/8"	15
ZN-17052	5/16" (1/4"-20) x 1-1/2"	50	ZN-17126	5/8" (1/2"-13) x 3/4"	15
ZN-17054	5/16" (1/4"-20) x 1-3/4"	50	ZN-17128	5/8" (1/2"-13) x 7/8"	15
ZN-17056	5/16" (1/4"-20) x 2"	50	ZN-17130	5/8" (1/2"-13) x 1"	15
ZN-17058	3/8" (5/16"-18) x 3/8"	25	ZN-17132	5/8" (1/2"-13) x 1-1/4"	15
ZN-17060	3/8" (5/16"-18) x 1/2"	25	ZN-17134	5/8" (1/2"-13) x 1-1/2"	15
ZN-17062	3/8" (5/16"-18) x 5/8"	25	ZN-17136	5/8" (1/2"-13) x 1-3/4"	15
ZN-17064	3/8" (5/16"-18) x 3/4"	25	ZN-17138	5/8" (1/2"-13) x 2"	15
ZN-17066	3/8" (5/16"-18) x 7/8"	25	ZN-17140	5/8" (1/2"-13) x 2-1/4"	15
ZN-17068	3/8" (5/16"-18) x 1"	25	ZN-17142	5/8" (1/2"-13) x 2-1/2"	15
ZN-17070	3/8" (5/16"-18) x 1-1/4"	25	ZN-17144	5/8" (1/2"-13) x 2-3/4"	15
ZN-17072	3/8" (5/16"-18) x 1-1/2"	25	ZN-17146	5/8" (1/2"-13) x 3"	15
ZN-17074	3/8" (5/16"-18) x 1-3/4"	25	ZN-17148	5/8" (1/2"-13) x 3-1/4"	15
ZN-17076	3/8" (5/16"-18) x 2"	25	ZN-17150	5/8" (1/2"-13) x 3-1/2"	15
ZN-17078	3/8" (5/16"-18) x 2-1/4"	25	ZN-17152	5/8" (1/2"-13) x 3-3/4"	15
ZN-17080	3/8" (5/16"-18) x 2-1/2"	25	ZN-17154	5/8" (1/2"-13) x 4"	15
ZN-17082	3/8" (5/16"-18) x 2-3/4"	25			

Presentación  
MIN

### Tornillo de Guía Métrico

Rosca métrica



Código	Medidas	MIN	Código	Medidas	MIN
ZN-17310	M6 x 8 mm (M5-0.8 TRD)	50	ZN-17388	M10 x 90 mm (M8-1.25 TRD)	25
ZN-17312	M6 x 10 mm (M5-0.8 TRD)	50	ZN-17390	M12 x 16 mm (M10-1.5 TRD)	20
ZN-17314	M6 x 12 mm (M5-0.8 TRD)	50	ZN-17392	M12 x 20 mm (M10-1.5 TRD)	20
ZN-17316	M6 x 16 mm (M5-0.8 TRD)	50	ZN-17394	M12 x 25 mm (M10-1.5 TRD)	20
ZN-17318	M6 x 20 mm (M5-0.8 TRD)	50	ZN-17396	M12 x 30 mm (M10-1.5 TRD)	20
ZN-17320	M6 x 25 mm (M5-0.8 TRD)	50	ZN-17398	M12 x 35 mm (M10-1.5 TRD)	20
ZN-17322	M6 x 30 mm (M5-0.8 TRD)	50	ZN-17400	M12 x 40 mm (M10-1.5 TRD)	20
ZN-17324	M6 x 35 mm (M5-0.8 TRD)	50	ZN-17402	M12 x 45 mm (M10-1.5 TRD)	20
ZN-17326	M6 x 40 mm (M5-0.8 TRD)	50	ZN-17404	M12 x 50 mm (M10-1.5 TRD)	20
ZN-17328	M6 x 45 mm (M5-0.8 TRD)	50	ZN-17406	M12 x 60 mm (M10-1.5 TRD)	20
ZN-17330	M6 x 50 mm (M5-0.8 TRD)	50	ZN-17408	M12 x 65 mm (M10-1.5 TRD)	20
ZN-17332	M6 x 55 mm (M5-0.8 TRD)	50	ZN-17410	M12 x 70 mm (M10-1.5 TRD)	20
ZN-17334	M6 x 60 mm (M5-0.8 TRD)	50	ZN-17412	M12 x 80 mm (M10-1.5 TRD)	20
ZN-17336	M8 x 10 mm (M6-1.0 TRD)	50	ZN-17414	M12 x 100 mm (M10-1.5 TRD)	20
ZN-17338	M8 x 12 mm (M6-1.0 TRD)	50	ZN-17416	M16 x 20 mm (M12-1.75 TRD)	15
ZN-17340	M8 x 16 mm (M6-1.0 TRD)	50	ZN-17418	M16 x 30 mm (M12-1.75 TRD)	15
ZN-17342	M8 x 20 mm (M6-1.0 TRD)	50	ZN-17420	M16 x 35 mm (M12-1.75 TRD)	15
ZN-17344	M8 x 25 mm (M6-1.0 TRD)	50	ZN-17422	M16 x 45 mm (M12-1.75 TRD)	15
ZN-17346	M8 x 30 mm (M6-1.0 TRD)	50	ZN-17424	M16 x 50 mm (M12-1.75 TRD)	15
ZN-17348	M8 x 35 mm (M6-1.0 TRD)	50	ZN-17426	M16 x 55 mm (M12-1.75 TRD)	15
ZN-17350	M8 x 40 mm (M6-1.0 TRD)	50	ZN-17428	M16 x 60 mm (M12-1.75 TRD)	15
ZN-17352	M8 x 45 mm (M6-1.0 TRD)	50	ZN-17430	M16 x 70 mm (M12-1.75 TRD)	15
ZN-17354	M8 x 50 mm (M6-1.0 TRD)	50	ZN-17432	M16 x 75 mm (M12-1.75 TRD)	15
ZN-17356	M8 x 55 mm (M6-1.0 TRD)	50	ZN-17434	M16 x 80 mm (M12-1.75 TRD)	15
ZN-17358	M8 x 60 mm (M6-1.0 TRD)	50	ZN-17436	M16 x 90 mm (M12-1.75 TRD)	15
ZN-17360	M10 x 10 mm (M8-1.25 TRD)	25	ZN-17438	M16 x 100 mm (M12-1.75 TRD)	15
ZN-17362	M10 x 12 mm (M8-1.25 TRD)	25	ZN-17440	M20 x 25 mm (M16-2.0 TRD)	10
ZN-17364	M10 x 16 mm (M8-1.25 TRD)	25	ZN-17442	M20 x 30 mm (M16-2.0 TRD)	10
ZN-17366	M10 x 25 mm (M8-1.25 TRD)	25	ZN-17444	M20 x 35 mm (M16-2.0 TRD)	10
ZN-17368	M10 x 30 mm (M8-1.25 TRD)	25	ZN-17446	M20 x 40 mm (M16-2.0 TRD)	10
ZN-17370	M10 x 35 mm (M8-1.25 TRD)	25	ZN-17448	M20 x 45 mm (M16-2.0 TRD)	10
ZN-17372	M10 x 40 mm (M8-1.25 TRD)	25	ZN-17450	M20 x 55 mm (M16-2.0 TRD)	10
ZN-17374	M10 x 45 mm (M8-1.25 TRD)	25	ZN-17452	M20 x 60 mm (M16-2.0 TRD)	10
ZN-17376	M10 x 50 mm (M8-1.25 TRD)	25	ZN-17454	M20 x 65 mm (M16-2.0 TRD)	10
ZN-17378	M10 x 55 mm (M8-1.25 TRD)	25	ZN-17456	M20 x 75 mm (M16-2.0 TRD)	10
ZN-17380	M10 x 60 mm (M8-1.25 TRD)	25	ZN-17458	M20 x 80 mm (M16-2.0 TRD)	10
ZN-17382	M10 x 70 mm (M8-1.25 TRD)	25	ZN-17460	M20 x 90 mm (M16-2.0 TRD)	10
ZN-17384	M10 x 75 mm (M8-1.25 TRD)	25	ZN-17462	M20 x 100 mm (M16-2.0 TRD)	10
ZN-17386	M10 x 80 mm (M8-1.25 TRD)	25			

Presentación  
MIN



### Opresor Allen Fraccional

Rosca fraccional

**DISPONIBLE:**  
En acero inoxidable  
VER PÁG. 386



Presentación

Código	Medidas	MIN
ZE-00996	4-40 x 1/2"	250
ZE-01010	5-40 x 1/8"	250
ZE-01012	5-40 x 3/16"	250
ZE-01014	5-40 x 1/4"	250
ZE-01016	5-40 x 5/16"	250
ZE-01018	5-40 x 3/8"	250
ZE-01020	5-40 x 1/2"	250
ZE-01022	6-32 x 1/8"	250
ZE-01024	6-32 x 3/16"	250
ZE-01026	6-32 x 1/4"	250
ZE-01028	6-32 x 5/16"	250
ZE-01030	6-32 x 3/8"	250
ZE-01032	6-32 x 1/2"	250
ZE-01034	8-32 x 1/8"	250
ZE-01036	8-32 x 3/16"	250
ZE-01038	8-32 x 1/4"	250
ZE-01040	8-32 x 5/16"	250
ZE-01042	8-32 x 3/8"	250
ZE-01044	8-32 x 1/2"	250
ZE-01046	10-24 x 3/16"	100
ZE-01048	10-24 x 1/4"	100
ZE-01050	10-24 x 5/16"	100
ZE-01052	10-24 x 3/8"	100
ZE-01054	10-24 x 1/2"	100

Código	Medidas	MIN
ZE-01056	10-24 x 5/8"	100
ZE-01058	10-24 x 3/4"	100
ZE-01060	10-24 x 1"	100
ZE-01062	1/4"-20 x 3/16"	100
ZE-01064	1/4"-20 x 1/4"	100
ZE-01066	1/4"-20 x 5/16"	100
ZE-01068	1/4"-20 x 3/8"	100
ZE-01070	1/4"-20 x 1/2"	100
ZE-01072	1/4"-20 x 5/8"	100
ZE-01074	1/4"-20 x 3/4"	100
ZE-01076	1/4"-20 x 1"	100
ZE-01078	5/16"-18 x 1/4"	100
ZE-01080	5/16"-18 x 5/16"	100
ZE-01082	5/16"-18 x 3/8"	100
ZE-01084	5/16"-18 x 1/2"	100
ZE-01086	5/16"-18 x 5/8"	100
ZE-01088	5/16"-18 x 3/4"	100
ZE-01090	5/16"-18 x 1"	100
ZE-01092	5/16"-18 x 1-1/4"	100
ZE-01094	3/8"-16 x 5/16"	100
ZE-01096	3/8"-16 x 3/8"	100
ZE-01098	3/8"-16 x 1/2"	100
ZE-01100	3/8"-16 x 5/8"	100

Código	Medidas	MIN
ZE-01102	3/8"-16 x 3/4"	100
ZE-01104	3/8"-16 x 1"	50
ZE-01106	3/8"-16 x 1-1/4"	50
ZE-01108	3/8"-16 x 1-1/2"	50
ZE-01110	3/8"-16 x 2"	50
ZE-01112	1/2"-13 x 1/2"	50
ZE-01114	1/2"-13 x 5/8"	50
ZE-01116	1/2"-13 x 3/4"	50
ZE-01118	1/2"-13 x 1"	50
ZE-01120	1/2"-13 x 1-1/4"	50
ZE-01122	1/2"-13 x 1 1/2"	50
ZE-01124	1/2"-13 x 2"	50
ZE-01126	5/8"-11 x 5/8"	25
ZE-01128	5/8"-11 x 3/4"	25
ZE-01130	5/8"-11 x 1"	25
ZE-01132	5/8"-11 x 1-1/4"	25
ZE-01134	5/8"-11 x 1 1/2"	25
ZE-01136	5/8"-11 x 2"	25
ZE-01138	3/4"-10 x 3/4"	25
ZE-01140	3/4"-10 x 1"	25
ZE-01142	3/4"-10 x 1-1/4"	25
ZE-01144	3/4"-10 x 1-1/2"	25
ZE-01146	3/4"-10 x 2"	25

### Opresor Allen Métrico

Rosca métrica



Presentación

Código	Medidas	MIN
ZE-03010	M4-0.7 x 10 mm	250
ZE-03012	M5-0.8 x 6 mm	250
ZE-03014	M5-0.8 x 8 mm	250
ZE-03016	M5-0.8 x 10 mm	100
ZE-03018	M6-1.0 x 10 mm	100
ZE-03020	M6-1.0 x 12 mm	100
ZE-03022	M6-1.0 x 16 mm	100
ZE-03024	M6-1.0 x 20 mm	100
ZE-03026	M8-1.25 x 12 mm	100
ZE-03028	M8-1.25 x 16 mm	100

Código	Medidas	MIN
ZE-03030	M10-1.50 x 10 mm	100
ZE-03032	M10-1.50 x 12 mm	100
ZE-03034	M10-1.50 x 16 mm	100
ZE-03036	M10-1.50 x 20 mm	100
ZE-03038	M10-1.50 x 25 mm	100
ZE-03040	M12-1.75 x 12 mm	100
ZE-03042	M12-1.75 x 16 mm	100
ZE-03044	M12-1.75 x 20 mm	100
ZE-03046	M12-1.75 x 25 mm	100

### Tapón NPT Allen Fraccional

Rosca fraccional



Presentación

Código	Medidas	MIN
ZE-05010	1/16"-27 x 8"	100
ZE-05012	1/8"-27 x 8"	100
ZE-05014	1/4"-18 x 12"	50
ZE-05016	3/8"-18 x 12"	50

Código	Medidas	MIN
ZE-05018	1/2"-14 x 16"	25
ZE-05020	3/4"-14 x 16"	25
ZE-05022	1-11-1/2" x 16.5"	10

### Varilla Roscada Grado 2 1 Metro de Largo

Disponible en rosca fraccional y métrica  
Acabado galvanizado

**DISPONIBLE:**  
En acero inoxidable  
VER PÁG. 386



Código	Medidas
ZF-03010	10 -24
ZF-03012	1/4"-20
ZF-03016	5/16"-18
ZF-03020	3/8"-16
ZF-03024	7/16"-14
ZF-03026	1/2"-13
ZF-03030	5/8"-11

Código	Medidas
ZF-03034	3/4"-10
ZF-03037	7/8"-9
ZF-03038	1"-8
ZF-03040	1-1/8"-7
ZF-03042	1-1/4"-7
ZF-03043	1-3/8"-6
ZF-03044	1-1/2"-6

Código	Medidas
ZF-04010	M6 -1
ZF-04012	M8 -1.25
ZF-04014	M10 -1.5
ZF-04016	M12 -1.75
ZF-04018	M14 -2
ZF-04020	M16 -2
ZF-04022	M20 -2.5
ZF-04024	M24 -3

### Varilla Roscada Grado 2 3 Metros de Largo

Rosca fraccional  
Acabado galvanizado



Código	Medidas
ZF-03014	1/4"-20
ZF-03018	5/16"-18
ZF-03022	3/8"-16
ZF-03028	1/2"-13
ZF-03032	5/8"-11
ZF-03036	3/4"-10

### Varilla Roscada B7 1 Metro de Largo

Rosca fraccional



Código	Medidas
ZF-01010	1/2"-13
ZF-01014	5/8"-11
ZF-01018	3/4"-10
ZF-01022	7/8"-9
ZF-01026	1"-8

### Varilla Roscada B7 3.65 Metros de Largo

Rosca fraccional



Código	Medidas
ZF-01012	1/2"-13
ZF-01016	5/8"-11
ZF-01020	3/4"-10
ZF-01024	7/8"-9
ZF-01028	1"-8
ZF-01030	1-1/8"-8
ZF-01032	1-1/4"-8

Código	Medidas
ZF-01034	1-3/8"-8
ZF-01036	1-1/2"-8
ZF-01038	1-5/8"-8
ZF-01040	1-3/4"-8
ZF-01042	1-7/8"-8
ZF-01044	2"-8

### Tuerca Hexagonal Liviana Fraccional

Rosca fraccional



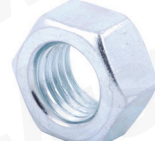
Presentación

Código	Medidas	MIN
ZK-09010	10-24	2000
ZK-09012	1/4"-20	1000
ZK-09014	5/16"-18	500
ZK-09016	3/8"-16	500
ZK-09018	7/16"-14	300
ZK-09020	1/2"-13	200
ZK-09022	9/16"-12	150
ZK-09024	5/8"-11	100
ZK-09026	3/4"-10	50

Código	Medidas	MIN
ZK-09028	7/8"-9	25
ZK-09030	1"-8	25
ZK-09032	1-1/8"-7	20
ZK-09034	1-1/4"-7	20
ZK-09036	1-3/8"-6	15
ZK-09038	1-1/2"-6	10
ZK-09040	1-3/4"-5	5
ZK-09042	2"-4.5	10

### Tuerca Hexagonal Liviana Galvanizada Fraccional

Rosca fraccional



Presentación

Código	Medidas	MIN
ZK-07010	10-24	2000
ZK-07012	1/4"-20	1000
ZK-07014	5/16"-18	500
ZK-07016	3/8"-16	500
ZK-07018	7/16"-14	300
ZK-07020	1/2"-13	200
ZK-07022	9/16"-12	150
ZK-07024	5/8"-11	100

Código	Medidas	MIN
ZK-07026	3/4"-10	50
ZK-07028	7/8"-9	25
ZK-07030	1"-8	25
ZK-07032	1-1/8"-7	20
ZK-07034	1-1/4"-7	20
ZK-07036	1-3/8"-6	15
ZK-07038	1-1/2"-6	10

TORNILLOS Y SUJETADORES





### Tuerca Hexagonal Liviana Fina

Rosca fina



Presentación



WESTON

Código	Medidas	MIN
ZK-09110	1/4"-28	1000
ZK-09112	5/16"-24	500
ZK-09114	3/8"-24	500
ZK-09116	7/16"-20	300
ZK-09118	1/2"-20	200
ZK-09120	9/16"-18	150

### Tuerca Hexagonal Liviana Fina Galvanizada

Rosca fina



Presentación



WESTON

Código	Medidas	MIN
ZK-07110	5/8"-18	100
ZK-07112	3/4"-16	50
ZK-07114	1"-14	25

### Tuerca Hexagonal Grado 5 Negra Fraccional

Rosca fraccional



Presentación



WESTON

Código	Medidas	MIN
ZK-13010	1/4"-20	1000
ZK-13012	5/16"-18	500
ZK-13014	3/8"-16	500
ZK-13016	7/16"-14	300
ZK-13018	1/2"-13	200
ZK-13020	9/16"-12	150

Código	Medidas	MIN
ZK-13022	5/8"-11	100
ZK-13024	3/4"-10	50
ZK-13028	1"-8	25
ZK-13030	1-1/8"-7	20
ZK-13032	1-1/4"-7	20

### Tuerca Hexagonal Grado 8 Negra Fraccional

Rosca fraccional



Presentación



WESTON

Código	Medidas	MIN
ZK-15010	1/4"-20	1000
ZK-15012	5/16"-18	500
ZK-15014	3/8"-16	500
ZK-15016	7/16"-14	300
ZK-15018	1/2"-13	200
ZK-15020	5/8"-11	150

Código	Medidas	MIN
ZK-15022	3/4"-10	100
ZK-15024	7/8"-9	50
ZK-15026	1"-8	25
ZK-15028	1-1/8"	25
ZK-15030	1-1/4"	20
ZK-15032	1-1/2"	20

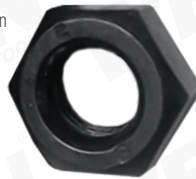
### Tuerca Hexagonal Grado 8 Fina Negra Métrica

Fabricada en acero al carbón

Acabado pavonado

Rosca fina

DIN934



WESTON

NUEVO

Código	Medidas
ZK-18014	M6-0.75
ZK-18016	M8-1
ZK-18018	M10-1
ZK-18020	M12-1.25
ZK-18022	M14-1.5

Código	Medidas
ZK-18024	M16-1.5
ZK-18026	M18-1.5
ZK-18028	M20-1.5
ZK-18032	M24-2

### Tuerca Hexagonal Grado 2H GIC Fraccional

Rosca fraccional



Presentación



WESTON

Código	Medidas	MIN
ZK-11010	1/2"-13	200
ZK-11012	5/8"-11	100
ZK-11014	3/4"-10	50
ZK-11016	7/8"-9	30
ZK-11018	1"-8	25
ZK-11020	1-1/8"-8	25
ZK-11022	1-1/4"-8	20
ZK-11024	1-3/8"-8	20
ZK-11026	1-1/2"-8	10
ZK-11028	1-5/8"-8	10

Código	Medidas	MIN
ZK-11030	1-3/4"-8	10
ZK-11032	1-7/8"-8	5
ZK-11034	2"-8	5
ZK-11036	2"-1/4-4.5	5
ZK-11038	2-1/4"-8	5
ZK-11040	2-1/2"-8	5
ZK-11042	2-3/4"-8	5
ZK-11044	3"-8	5
ZK-11046	3-1/2"-8	1
ZK-11048	4"-8	1

### Tuerca Hexagonal Grado 2H Negra Fraccional

Rosca fraccional



Presentación



WESTON

Código	Medidas	MIN
ZK-11210	1/2"-13	200
ZK-11212	5/8"-11	100
ZK-11214	3/4"-10	50
ZK-11216	7/8"-9	30
ZK-11218	1"-8	25
ZK-11220	1-1/8"-8	25
ZK-11221	1-1/4"-7	20
ZK-11222	1-1/4"-8	20
ZK-11224	1-3/8"-8	20
ZK-11225	1-1/2"-6	10
ZK-11226	1-1/2"-8	10
ZK-11228	1-5/8"-8	10

Código	Medidas	MIN
ZK-11230	1-3/4"-8	10
ZK-11232	1-7/8"-8	5
ZK-11234	2"-8	5
ZK-11236	2-1/4"-8	5
ZK-11238	2-1/2"-8	5
ZK-11240	2-3/4"-8	5
ZK-11242	3"-8	5
ZK-11244	3-1/2"-8	1
ZK-11246	4"-8	1

### Tuerca Hexagonal Clase 8 DIN 934 Métrica

Rosca métrica



Presentación



WESTON

Código	Medidas	MIN
ZK-17010	M4-0.7	1000
ZK-17012	M5-0.8	500
ZK-17014	M6-1.0	500
ZK-17016	M8-1.25	300
ZK-17018	M10-1.5	200
ZK-17020	M12-1.75	150

Código	Medidas	MIN
ZK-17022	M14-2.0	50
ZK-17024	M16-2.0	50
ZK-17026	M18-2.5	25
ZK-17028	M20-2.5	25
ZK-17030	M22-2.5	20
ZK-17032	M24-3.0	20

### Tuerca Hexagonal Clase 8 DIN 934 Galvanizada Métrica

Rosca métrica



Presentación



WESTON

Código	Medidas	MIN
ZK-19010	M4-0.7	1000
ZK-19012	M5-0.8	500
ZK-19014	M6-1.0	500
ZK-19016	M8-1.25	300
ZK-19018	M10-1.5	200
ZK-19020	M12-1.75	150

Código	Medidas	MIN
ZK-19022	M14-2.0	50
ZK-19024	M16-2.0	50
ZK-19026	M18-2.5	25
ZK-19028	M20-2.5	25
ZK-19030	M22-2.5	20
ZK-19032	M24-3.0	20

### Tuerca de Seguridad Galvanizada Fraccional

Con inserto de nailon

Rosca fraccional



Presentación

DISPONIBLE

En acero inoxidable

VER PÁG. 386



WESTON

Código	Medidas	MIN
ZK-03010	10-24	500
ZK-03012	1/4"-20	500
ZK-03014	5/16"-18	300
ZK-03016	3/8"-16	250
ZK-03018	7/16"-14	250
ZK-03020	1/2"-12	100

Código	Medidas	MIN
ZK-03022	1/2"-13	100
ZK-03024	9/16"-12	10
ZK-03026	5/8"-11	100
ZK-03028	3/4"-10	50
ZK-03030	7/8"-9	50
ZK-03032	1"-8	25

### Tuerca de Seguridad Galvanizada Métrica

Con inserto de nailon

Rosca métrica



Presentación



WESTON

Código	Medidas	MIN
ZK-03110	M6 x 1	500
ZK-03112	M8 x 1.25	300
ZK-03114	M10 x 1.5	250
ZK-03116	M12 x 1.75	100
ZK-03118	M14 x 2	100

Código	Medidas	MIN
ZK-03120	M16 x 2	100
ZK-03122	M18 x 2.5	50
ZK-03124	M20 x 2.5	50
ZK-03126	M22 x 2.5	25
ZK-03128	M24 x 3	25

### Tuerca Hexagonal con Arandela Dentada Galvanizada Fraccional

Rosca fraccional



Presentación

DISPONIBLE

En acero inoxidable

VER PÁG. 386



WESTON

Código	Medidas	MIN
ZK-05010	1/4"-20	500
ZK-05012	5/16"-18	500
ZK-05014	3/8"-16	250
ZK-05016	7/16"-14	200
ZK-05018	1/2"-13	200
ZK-05020	5/8"-11	100
ZK-05022	3/4"-10	100

### Tuerca Bellota UNC Galvanizada Fraccional

Rosca fraccional



Presentación

Código	Medidas	MIN
ZK-23010	10-24 UNC	200
ZK-23012	1/4"-20 UNC	200
ZK-23014	5/16"-18 UNC	100
ZK-23016	3/8"-16 UNC	50
ZK-23018	1/2"-13 UNC	50



### Tuerca Mariposa Galvanizada

**DISPONIBLE:**  
En acero inoxidable  
VER PÁG. 387



Código	Medidas	MIN
ZK-21010	10-24	100
ZK-21012	1/4"-20	100
ZK-21014	5/16"-18	100
ZK-21016	3/8"-16	100
ZK-21018	1/2"-13	50



### Tuerca de Cople Galvanizada



Presentación

Código	Medidas	MIN
ZK-01010	10-24	100
ZK-01012	1/4"-20	100
ZK-01014	5/8"-18	100
ZK-01016	3/8"-16	100
ZK-01018	1/2"-13	50
ZK-01020	5/8"-11	50
ZK-01022	3/4"-10	25



### Tuerca Strut Galvanizada



Presentación

Código	Medidas	MIN: 200
ZK-25010	1/4" x 34.5 x 19 x 6	
ZK-25012	3/8" x 34.5 x 19 x 7	
ZK-25014	1/2" x 34.5 x 19 x 9.2	



### Tuerca Tipo "T" con Brida Soldable



Presentación

Código	Medidas	MIN: 100
ZK-27110	1/4"-20 x 5/16"	



### Tuerca Tipo "T" con 4 Puntas Galvanizada



Presentación

Código	Medidas	MIN: 100
ZK-27010	1/4"-20 x 5/16"	



### Rondana Plana Pulida Fraccional

Presentación: costal de 25 kg

**DISPONIBLE:**  
En acero inoxidable  
VER PÁG. 387

Código	Medidas	Código	Medidas
ZP-01010	3/16"	ZP-01024	5/8"
ZP-01012	1/4"	ZP-01026	3/4"
ZP-01014	5/16"	ZP-01028	7/8"
ZP-01016	3/8"	ZP-01030	1"
ZP-01018	7/16"	ZP-01032	1-1/8"
ZP-01020	1/2"	ZP-01034	1-1/4"
ZP-01022	9/16"	ZP-01036	1-1/2"



### Rondana Plana Galvanizada Métrica

Cumple con la norma DIN125  
Ideal para prevenir el aflojamiento de tornillos

**DISPONIBLE:**  
En acero inoxidable  
VER PÁG. 387

Código	Medidas	MIN	Código	Medidas	MIN
ZP-01004	M4	1000	ZP-010012	M12	300
ZP-01005	M5	1000	ZP-010014	M14	300
ZP-01006	M6	1000	ZP-010016	M16	300
ZP-01008	M8	500	ZP-010020	M20	100
ZP-010010	M10	500	ZP-010024	M24	100



### Rondana Plana Galvanizada USS

Presentación: caja de 20 kg

Código	Medidas	Código	Medidas
ZP-05010	3/16"	ZP-05024	3/4"
ZP-05012	1/4"	ZP-05026	7/8"
ZP-05014	5/16"	ZP-05028	1"
ZP-05018	7/16"	ZP-05030	1-1/8"
ZP-05020	1/2"	ZP-05032	1-1/4"
ZP-05022	5/8"	ZP-05034	1-3/8"
		ZP-05036	1-1/2"



### Rondana Plana F436 Negra Fraccional

Código	Medidas	MIN	Código	Medidas	MIN
ZP-07010	1/2"	100	ZP-07028	1-3/4"	25
ZP-07012	5/8"	100	ZP-07030	2"	25
ZP-07014	3/4"	100	ZP-07032	2-1/4"	20
ZP-07016	7/8"	100	ZP-07034	2-1/2"	20
ZP-07018	1"	50	ZP-07036	2-3/4"	10
ZP-07020	1-1/8"	50	ZP-07038	3"	10
ZP-07022	1-1/4"	50	ZP-07040	3-1/2"	5
ZP-07024	1-3/8"	25	ZP-07042	4"	5
ZP-07026	1-1/2"	25			



### Rondana Plana Negra Métrica

Cumple con la norma DIN125  
Ideal para prevenir el aflojamiento de tornillos



Presentación

Código	Medidas	MIN	Código	Medidas	MIN
ZP-08004	M4	1000	ZP-080012	M12	300
ZP-08005	M5	1000	ZP-080014	M14	300
ZP-08006	M6	1000	ZP-080016	M16	300
ZP-08008	M8	500	ZP-080020	M20	100
ZP-080010	M10	500	ZP-080024	M24	100



### Rondana Plana F436 GIC



Presentación

Código	Medidas	MIN	Código	Medidas	MIN
ZP-09010	1/2"	100	ZP-09028	1-3/4"	25
ZP-09012	5/8"	100	ZP-09030	2"	25
ZP-09014	3/4"	100	ZP-09032	2-1/4"	20
ZP-09016	7/8"	100	ZP-09034	2-1/2"	20
ZP-09018	1"	50	ZP-09036	2-3/4"	10
ZP-09020	1-1/8"	50	ZP-09038	3"	10
ZP-09022	1-1/4"	50	ZP-09040	3-1/2"	5
ZP-09024	1-3/8"	25	ZP-09042	4"	5
ZP-09026	1-1/2"	25			



### Rondana de Presión Galvanizada Fraccional

**DISPONIBLE:**  
En acero inoxidable  
VER PÁG. 387

Código	Medidas	MIN	Código	Medidas	MIN
ZP-11010	#10	500	ZP-11026	7/8"	100
ZP-11012	1/4"	500	ZP-11028	1"	50
ZP-11014	5/16"	500	ZP-11030	1-1/8"	25
ZP-11016	3/8"	300	ZP-11032	1-1/4"	25
ZP-11018	7/16"	300	ZP-11034	1-3/8"	20
ZP-11020	1/2"	200	ZP-11036	1-1/2"	20
ZP-11022	5/8"	100			
ZP-11024	3/4"	100			



### Rondana de Presión Galvanizada Métrica



**DISPONIBLE:**  
En acero inoxidable  
VER PÁG. 387



Código	Medida	Código	Medida
ZP-11104	M4	ZP-11114	M14
ZP-11105	M5	ZP-11116	M16
ZP-11106	M6	ZP-11120	M20
ZP-11108	M8	ZP-11124	M24
ZP-11110	M10		
ZP-11112	M12		

### Rondana de Presión Negra Fraccional



Presentación

Código	Medidas	MIN	Código	Medidas	MIN
ZP-13010	#10	500	ZP-13024	3/4"	100
ZP-13012	1/4"	500	ZP-13026	7/8"	100
ZP-13014	5/16"	500	ZP-13028	1"	50
ZP-13016	3/8"	300	ZP-13030	1-1/8"	25
ZP-13018	7/16"	300	ZP-13032	1-1/4"	25
ZP-13020	1/2"	200	ZP-13034	1-3/8"	20
ZP-13022	5/8"	100	ZP-13036	1-1/2"	20

### Rondana de Presión Negra Métrica



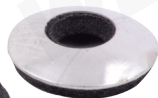
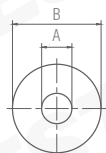
Presentación

Código	Medidas	Código	Medidas
ZP-13104	M4	ZP-13120	M20
ZP-13105	M5	ZP-13124	M24
ZP-13106	M6		
ZP-13108	M8		
ZP-13110	M10		
ZP-13112	M12		
ZP-13114	M14		
ZP-13116	M16		

### Rondana Selladora EPDM con Neopreno



Para pija punta de broca



Presentación  
MIN: 2000

Código	ØInterior (A)	ØExterior (B)	Grosor de rondana (C)	Grosor de neopreno (D)
ZP-15010	6.3 mm	16 mm	2.0±0.2 mm	0.5±1 mm

### Pija Hexagonal Punta de Broca Galvanizada



Sin rondana

\*Venta de caja MASTER (completa) a granel

**DISPONIBLE:**  
En acero inoxidable  
VER PÁG. 387



Presentación \*

Código	Medidas	MIN	MASTER
PI-01001	#8x1/2"	100	12000
*PI-01001-G	#8x1/2"	-	15000
PI-01005	#8x3/4"	700	8400
*PI-01005-G	#8x3/4"	-	12000
PI-01010	#10x3/4"	600	7200
*PI-01010-G	#10x3/4"	-	8500
PI-01015	#10x1"	400	4800
PI-01020	#12x3/4"	400	6000
PI-01025	#14x3/4"	400	4000
*PI-01025-G	#14x3/4"	-	5000
PI-01030	#14x1"	400	3200
*PI-01030-G	#14x1"	-	4200
PI-01035	#14x1-1/4"	300	2400
*PI-01035-G	#14x1-1/4"	-	3500
PI-01040	#14x1-1/2"	400	3200
PI-01045	#14x2"	300	2400
PI-01050	#14x3"	200	1600

### Pija Hexagonal Punta de Broca Reducida con Rondana Galvanizada



Reducida (Lap)  
Con rondana



Código	Medidas	MIN	MASTER
PI-03001	#14 x 7/8"	400	3200
PI-03005	#14 x 1"	400	3200
PI-03010	#14 x 1-1/2"	300	2400

### Pija Hexagonal Ranurada Galvanizada para Lámina



Presentación



Código	Medidas	MIN	MASTER
PI-04001	#8x3/4"	800	9600
PI-04005	#8x1"	600	7200
PI-04010	#10x3/4"	500	6000
PI-04015	#10x1"	400	4800
PI-04020	#10x1-1/4"	500	4000
PI-04025	#10x1-1/2"	500	4000
PI-04030	#10x2"	400	3200
PI-04035	#10x2-1/2"	300	300
PI-04040	#10x3"	250	250
PI-04045	#12x3/4"	500	500
PI-04050	#12x1"	600	4800
PI-04055	#12x1-1/4"	400	3200
PI-04060	#12x1-1/2"	400	3200
PI-04065	#12x2"	400	3200
PI-04070	#14x3/4"	500	4000
PI-04075	#14x1"	400	3200
PI-04080	#14x1-1/4"	300	300
PI-04085	#14x1-1/2"	400	400
PI-04090	#14x2"	300	300
PI-04095	#14x2-1/2"	200	1600
PI-04100	#14x3"	200	1600

### Pija Cabeza Combinada Galvanizada para Lámina



Presentación



Código	Medidas	MIN	MASTER
PI-14001	#8x3/8"	1000	16000
PI-14005	#8 x 1/2"	1000	16000
PI-14010	#8 x 3/4"	1000	12000
PI-15001	#8 x 3/4" LATÓN	1000	1200
PI-14015	#8 x 1"	1000	1200
PI-15005	#8 x 1" LATÓN	1000	12000
PI-14020	#8 x 1-1/4"	1000	12000
PI-14025	#8 x 1-1/2"	800	9600
PI-14030	#8 x 2"	500	6000
PI-14035	#8 x 2-1/2"	500	6000
PI-14040	#8 x 3"	400	4800
PI-14045	#10 x 1/2"	1000	12000
PI-14050	#10 x 3/4"	1000	12000
PI-14055	#10 x 1"	800	9600
PI-14060	#10 x 1-1/4"	600	7200
PI-14065	#10 x 1-1/2"	600	7200
PI-14070	#10 x 2"	400	4800
PI-14075	#10 x 2-1/2"	400	4800
PI-14080	#10 x 3"	350	4200
PI-14085	#12 x 1/2"	800	9600
PI-14090	#12 x 3/4"	800	9600
PI-14095	#12 x 1"	500	6000
PI-14100	#12 x 1-1/2"	500	6000
PI-14105	#12 x 2"	300	3600
PI-14110	#12 x 2-1/2"	300	3600
PI-14115	#12 x 3"	200	2400
PI-14120	#14 x 1"	400	4800
PI-14125	#14 x 1-1/2"	300	3600
PI-14130	#14 x 2"	200	2400
PI-14135	#14 x 2-1/2"	200	2400
PI-14140	#14 x 3"	200	2400

### Pija Cabeza de Cruz para Lámina



Presentación



Código	Medidas	MIN	Código	Medidas	MIN
● ZL-11222-R	#8x2-1/2"	500	● ZL-11250-R	#12x2"	500
● ZL-11224-R	#8x3"	400	● ZL-11252-R	#12x2-1/2"	400
● ZL-11226-R	#10x1/2"	1750	● ZL-11254-R	#12x3"	200
● ZL-11238-R	#10x2-1/2"	450	● ZL-11256-R	#14x1"	900
● ZL-11240-R	#10x3"	400	● ZL-11258-R	#14x1-1/2"	600
● ZL-11242-R	#12x1/2"	1500	● ZL-11260-R	#14x2"	400
● ZL-11244-R	#12x3/4"	1000	● ZL-11262-R	#14x2-1/2"	300

TORNILLOS Y SUJETADORES

**Pija Cabeza Plana  
Punta de Broca  
Galvanizada  
para Lámina**



**CÓDIGOS  
NUEVOS!**



Presentación

Código	Medidas	MIN	MASTER
PI-06001	#8 x 2-3/8"	500	4000
PI-06005	#8 x 3"	300	2400

**Pija Rosca Fina  
Galvanizada  
para Tablaroca**



**CÓDIGOS  
NUEVOS!**



Presentación

Código	Medidas	MIN	MASTER
PI-19001	#6 x 1"	1800	21600
PI-19005	#6 x 1-1/8"	1500	18000

**Pija K-Lath Phillips  
Cabeza Extendida  
Punta de Broca  
Galvanizada**



**CÓDIGOS  
NUEVOS!**



Presentación

Código	Medidas	MIN	MASTER
PI-10001	#7x7/16"	1400	1400
PI-10005	#8x1/2"	1000	12000
*PI-10005-G	#8x1/2"	-	16000
PI-10010	#8x3/4"	800	9600
*PI-10010-G	#8x3/4"	-	12000
PI-10015	#8x1"	900	7200
*PI-10015-G	#8x1"	-	10000
PI-10020	#8x1-1/4"	600	4800
PI-10025	#8x1-1/2"	700	5600
*PI-10025-G	#8x1-1/2"	-	8000
PI-10030	#8x2"	500	4000
*PI-10030-G	#8x2"	-	6000

MIN: 1000 / MASTER 12000

**Pija K-Lath Phillips  
Cabeza Extendida  
Punta Tipo AB  
Galvanizada**



**NUEVO!**



Presentación

Código	Medidas	MIN	MASTER
PI-12001	#8x1/2"	1000	1200
PI-12005	#8x3/4"	1200	9600
PI-12010	#8x1"	900	7200

**Pija para Tablaroca**



**NUEVO!**

\*Venta de caja MASTER (completa) a granel



Presentación

Código	Medidas	MIN	MASTER
PI-16001	#6x1/2"	3000	3600
PI-16005	#6x5/8"	2000	24000
PI-16010	#6x3/4"	2500	30000
PI-16015	#6x1"	1800	21600
*PI-16015-G	#6x1"	-	18000
PI-16025	#6x1-1/4"	1200	14400
*PI-16025-G	#6x1-1/4"	-	15000
PI-16020	#6x1-1/2"	1000	1200
*PI-16020-G	#6x1-1/2"	-	14000
PI-16030	#6x2"	500	6000
*PI-16030-G	#6x2"	-	10000
PI-16035	#8x3/4"	2000	24000
*PI-16035-G	#8x3/4"	-	18000
PI-16040	#8x1"	1500	18000
*PI-16040-G	#8x1"	-	15000
PI-16045	#8x1-1/4"	1000	12000
*PI-16045-G	#8x1-1/4"	-	12000
PI-16050	#8x1-1/2"	450	5400
*PI-16050-G	#8x1-1/2"	-	10000
PI-16055	#8x2"	500	6000
*PI-16055-G	#8x2"	-	8000
PI-16060	#8x2-1/2"	450	5400
PI-16065	#8x3"	400	4800
PI-16070	#10x1-1/2"	700	8400
PI-16075	#10x3"	300	3600
PI-16080	#10x4"	300	3600
PI-16085	#12x2"	200	2400

**Pija Rosca Fina  
para Tablaroca**



**CÓDIGOS  
NUEVOS!**



Presentación

Código	Medidas	MIN	MASTER
PI-17001	#6 x 1"	1800	21600
PI-17005	#6 x 1-1/4"	1000	12000
PI-17010	#6 x 1-1/2"	1000	12000
PI-17015	#6 x 1-5/8"	700	8400
PI-17020	#6 x 2"	500	6000

**Pija Punta de Broca  
Galvanizada  
para Tablaroca**



**CÓDIGOS  
NUEVOS!**



Presentación

\*Venta de caja MASTER (completa) a granel

Código	Medidas	MIN	MASTER
PI-18001	#6 x 1"	1000	12000
PI-18005	#6 x 1-1/8"	1200	9600
PI-18010	#6 x 1-1/4"	1000	8000
PI-18015	#6 x 1-5/8"	1000	8000
PI-18020	#6 x 2"	1200	5600
*PI-18020-G	#6 x 2"	-	9000
PI-18025	#8 x 3/4"	1200	14400
PI-18030	#8 x 2-3/8"	500	4000
*PI-18030-G	#8 x 2-3/8"	-	6000
PI-18035	#8 x 2-5/8"	400	3200
PI-18040	#8 x 3"	300	2400

**Pija K-Lath Phillips  
Cabeza Extendida  
Punta de Broca  
Negra**



**NUEVO!**



Presentación

Código	Medidas	MIN	MASTER
PI-11001	#8x1/2"	1000	12000
PI-11005	#8x3/4"	800	9600
PI-11010	#8x1"	900	7200

**Pija K-Lath Phillips  
Cabeza Extendida  
Punta Tipo AB  
Negra**



**NUEVO!**



Presentación

Código	Medidas	MIN	MASTER
PI-13001	#8x1/2"	1000	12000
PI-13005	#8x3/4"	1200	9600
PI-13010	#8x1"	900	7200

**Pija Phillips Cabeza Plana  
Punta Tipo AB  
Galvanizada**



**CÓDIGOS  
NUEVOS!**



Presentación

Código	Medidas	MIN	MASTER
PI-05001	#8x1/2"	1000	16000
PI-05005	#8x3/4"	1000	16000
PI-05010	#8x1"	1000	12000
PI-05015	#8x1-1/4"	800	9600
PI-05020	#8x1-1/2"	600	7200
PI-05025	#8x2"	500	6000
PI-05030	#8x2-1/2"	300	3600
PI-05033	#8 x 3"	300	3600
PI-05035	#10x3/4"	800	9600
PI-05040	#10x1"	600	7200
PI-05045	#10x1-1/4"	600	7200
PI-05050	#10x1-1/2"	500	6000
PI-05055	#10x2"	300	3600
PI-05060	#10x2-1/2"	300	3600
PI-05065	#10x3"	200	2400

**Pija Phillips con Nibs  
para Aglomerado**



**CÓDIGOS  
NUEVOS!**



Presentación

Código	Medidas	MIN	MASTER
PI-20001	#6x3/4"	2500	30000
PI-20005	#6x1"	2000	24000
PI-20010	#6x1-1/2"	1000	12000
PI-20015	#6x2"	500	6000
PI-20020	#8x1"	1000	12000
PI-20025	#8x1-1/4"	1000	12000
PI-20030	#8x1-1/2"	800	9600
PI-20035	#8x2"	500	6000
PI-20040	#8x3"	400	4800
PI-20050	#10x2"	400	4800
PI-20055	#10x2-1/2"	300	3600
PI-20060	#10x3"	250	3000



**Pija Phillips Negra para Madera**

WESTON  
CÓDIGOS NUEVOS



Presentación

Código	Medidas	MIN	MASTER
PI-21001	#14x2"	100	1200
PI-21005	#14x2-1/2"	100	1200
PI-21010	#14x3"	100	1200

**Pija Phillips Galvanizada para Madera**

WESTON  
CÓDIGOS NUEVOS



Presentación

Código	Medidas	MIN	MASTER
PI-22001	#8x2"	200	2400
PI-22005	#8x2-1/2"	200	2400
PI-22010	#10x1-1/2"	200	3200
PI-22015	#10x2"	200	2400
PI-22020	#10x2-1/2"	200	2400
PI-22025	#10x3"	200	2400

**Pija Cabeza Plana Niquelada para Madera**

WESTON  
CÓDIGOS NUEVOS



Presentación

Código	Medidas	MIN	MASTER
PI-23001	#6 x 1/2"	3000	36000
PI-23005	#6 x 5/8"	3000	36000
PI-23010	#6 x 3/4"	2000	24000
PI-23015	#6 x 1-1/2"	1000	12000
PI-23020	#6 x 1-3/4"	700	5600
PI-23025	#8 x 1"	1500	18000

**Pija Cabeza Tipo Quadrex Punta Ranurada para Madera**

WESTON  
NUEVO

Cabeza combinada (cuadro + phillips)  
Para fabricación de muebles,  
especiales para uniones de melamina  
y madera en general



Acabado negro



Cabeza Tipo Quadrex



Acabado galvanizado

Código	Medida	Acabado	MIN	MASTER
ZL-18016	#8 x 1-1/4"	Negro	500	6000
ZL-18018	#8 x 1"	Galvanizado	500	8000

**Pija Framer Phillips Punta de Broca Galvanizada**

WESTON  
CÓDIGOS NUEVOS



Presentación

MIN: 1200 / MASTER: 14400

Código	Medidas
PI-07001	#7 x 7/16"

**Pija Hexagonal Galvanizada para Madera**

WESTON



Presentación

Código	Medidas	MIN	Código	Medidas	MIN	Código	Medidas	MIN	Código	Medidas	MIN
ZN-01010	1/4" x 1"	100	ZN-01062	1/4" x 6"	50	ZN-01070	5/16" x 5"	50	ZN-01078	3/8" x 6"	50
ZN-01012	1/4" x 1-1/4"	100	ZN-01022	5/16" x 1"	100	ZN-01072	5/16" x 6"	50	ZN-01080	1/2" x 2"	100
ZN-01014	1/4" x 1-1/2"	100	ZN-01024	5/16" x 1-1/4"	100	ZN-01034	3/8" x 1-1/2"	100	ZN-01082	1/2" x 2-1/2"	100
ZN-01016	1/4" x 2"	100	ZN-01026	5/16" x 1-1/2"	100	ZN-01036	3/8" x 2"	100	ZN-01046	1/2" x 3"	50
ZN-01018	1/4" x 2-1/2"	50	ZN-01028	5/16" x 2"	100	ZN-01038	3/8" x 2-1/2"	50	ZN-01084	1/2" x 3-1/2"	50
ZN-01020	1/4" x 3"	50	ZN-01030	5/16" x 2-1/2"	50	ZN-01040	3/8" x 3"	50	ZN-01048	1/2" x 4"	50
ZN-01054	1/4" x 3-1/2"	50	ZN-01032	5/16" x 3"	50	ZN-01042	3/8" x 3-1/2"	50	ZN-01086	1/2" x 4-1/2"	50
ZN-01056	1/4" x 4"	50	ZN-01064	5/16" x 3-1/2"	50	ZN-01044	3/8" x 4"	50	ZN-01050	1/2" x 5"	50
ZN-01058	1/4" x 4-1/2"	50	ZN-01066	5/16" x 4"	100	ZN-01074	3/8" x 4-1/2"	50	ZN-01052	1/2" x 6"	50
ZN-01060	1/4" x 5"	50	ZN-01068	5/16" x 4-1/2"	50	ZN-01076	3/8" x 5"	50			

**PIJAS**



**Pija Framer Phillips Punta Tipo AB**



**Pija para Fibracemento (Durock)**

Para unir tablas de fibracemento



Presentación **MIN: 1200 / MASTER: 14400**

Código	Medidas	Acabado
PI-08001	#7 x 7/16"	Galvanizado
PI-09001	#7 x 7/16"	Negro



Presentación

Código	Medidas	MIN	MASTER
PI-27001	#8 x 1"	800	6400
PI-27005	#8 x 1-1/4"	700	5600
PI-27010	#8 x 1-1/2"	600	4800



**Pija Hexagonal para Concreto**



Presentación

Código	Medidas	MIN	MASTER
PI-24001	3/16" x 1-3/4"	350	2800
PI-24005	1/4" x 1-1/4"	400	3200
PI-24010	1/4" x 2-1/4"	250	2000
PI-24015	1/4" x 2-3/4"	200	1600

**Pija Hexagonal Ranurada para Concreto**



**Pija Cabeza Plana para Concreto**



**Ancla Camisa Reforzada Galvanizada**

Fabricada con camisa corta de grueso calibre  
Cuerdas expuestas  
Para fijación pesada



Presentación

Código	Medidas	MIN	MASTER
PI-25001	3/16" x 1-1/4"	500	4000
PI-25005	3/16" x 2-1/4"	300	2400
PI-25010	1/4" x 1-3/4"	250	2000



Presentación

Código	Medidas	MIN	MASTER
PI-26001	3/16" x 1-1/4"	700	5600
PI-26005	3/16" x 1-3/4"	400	3200
PI-26010	3/16" x 2-1/4"	400	3200
PI-26015	1/4" x 1-1/4"	500	4000
PI-26020	1/4" x 1-3/4"	300	2400
PI-26025	1/4" x 2-1/4"	200	1600
PI-26030	1/4" x 2-3/4"	200	1600



Código	Medida	Largo	Camisa	MIN
Z-39800	#10-24	2-7/16"	1/4"	350
Z-39808	5/16-18"	3-5/16"	3/8"	100
Z-39812	3/8-16"	3-13/16"	1/2"	50

**Ancla Camisa Reforzada Tropicalizada**

Fabricada con camisa corta de grueso calibre  
Cuerdas expuestas  
Para fijación pesada



**Ancla Arpón**



**Ancla para Alambre**



Código	Medida	Largo	Rotura (MPa)	Capacidad	MIN
Z-39695	1/4"-20	2-1/4"	390	1,000 kg	100
Z-39701	5/16"-18	2-1/2"	387	1,500 kg	-
Z-39705	3/8"-16	3"	397	2,200 kg	50
Z-39710	1/2"-13	3-1/2"	382	2,800 kg	25
Z-39802	#10-24	2-7/16"	-	-	350
Z-39804	1/4"-20	2-13/16"	-	-	200
Z-39806	5/16"-18	3-5/16"	-	-	100
Z-39810	3/8"-16	3-13/16"	-	-	50

Código	Medidas	MIN
Z-39515	1/4" x 1-3/4"	240
Z-39520	1/4" x 2-1/4"	190
Z-39525	1/4" x 3"	140
Z-39527	1/4" x 3-1/4"	120
Z-39529	1/4" x 3-1/2"	100
Z-39530	5/16" x 2"	200
Z-39535	5/16" x 2-3/4"	120
Z-39540	5/16" x 3-1/2"	90
Z-39545	5/16" x 5"	100
Z-39550	3/8" x 2-1/4"	120
Z-39555	3/8" x 2-3/4"	90
Z-39560	3/8" x 3"	80
Z-39565	3/8" x 3-1/2"	60
Z-39570	3/8" x 3-3/4"	80
Z-39575	3/8" x 5"	70
Z-39580	1/2" x 2-3/4"	50
Z-39585	1/2" x 3-3/4"	30
Z-39587	1/2" x 4-1/4"	30
Z-39590	1/2" x 4-1/2"	40
Z-39595	1/2" x 5-1/2"	25

Código	Medidas	MIN
Z-39600	1/2" x 7"	30
Z-39605	5/8" x 3-1/2"	25
Z-39610	5/8" x 4-1/2"	25
Z-39612	5/8" x 4-3/4"	25
Z-39615	5/8" x 5"	25
Z-39620	5/8" x 6"	20
Z-39625	5/8" x 7"	15
Z-39630	5/8" x 8-1/2"	20
Z-39635	3/4" x 4-1/4"	15
Z-39640	3/4" x 4-3/4"	15
Z-39645	3/4" x 5-1/2"	10
Z-39650	3/4" x 6-1/4"	10
Z-39655	3/4" x 7"	15
Z-39660	3/4" x 8-1/2"	15
Z-39665	3/4" x 10"	10
Z-39670	3/4" x 12"	10
Z-39675	1" x 6"	6
Z-39680	1" x 9"	5
Z-39685	1" x 12"	5

Código	Medidas	MIN
Z-39690	1/4" x 2-1/4"	200

**Taquete Plástico**



**Taquete Expansor Tropicalizado**

Fabricado en zinc  
Acabado tropicalizado



**Remache de Golpe para Concreto**



Código	Medidas	Color	MIN CAJA
Z-39815	3/16" x 22 mm	Azul	60000
Z-39820	1/4" x 25 mm	Rojito	40000
Z-39825	5/16" x 30 mm	Amarillo	20000
Z-39830	3/8" x 35 mm	Verde	14000

Código	Medidas	MIN
Z-39715	1/4"x1-7/8"	100
Z-39720	5/16"x2"	50

Código	Medidas	MIN
Z-39735	1/4" x 1"	200
Z-39740	1/4" x 1-1/2"	200
Z-39745	1/4" x 2"	200

## Remache Tipo Pop de Aluminio

Cuerpo de aluminio con cabeza de acero



Código	Modelo	Medidas	MIN
Z-42000	AS41	1/8" x 1/16"	1,000
Z-42010	AS42	1/8" x 1/8"	1,000
Z-42020	AS43	1/8" x 3/16"	1,000
Z-42030	AS44	1/8" x 1/4"	1,000
Z-42035	AS45	1/8" x 5/16"	1,000
Z-42040	AS46	1/8" x 3/8"	1,000
Z-42045	AS48	1/8" x 1/2"	1,000
Z-42050	AS52	5/32" x 1/8"	1,000
Z-42060	AS53	5/32" x 3/16"	1,000
Z-42070	AS54	5/32" x 1/4"	1,000
Z-42080	AS56	5/32" x 3/8"	1,000
Z-42082	AS58	5/32" x 1/2"	500
Z-42084	AS62	3/16" x 1/8"	500

Código	Modelo	Medidas	MIN
Z-42090	AS64	3/16" x 1/4"	500
Z-42095	AS64LF	3/16" x 1/4"	250
Z-42100	AS66	3/16" x 3/8"	500
Z-42105	AS66LF	3/16" x 3/8"	250
Z-42110	AS68	3/16" x 1/2"	500
Z-42115	AS68LF	3/16" x 1/2"	250
Z-42120	AS610	3/16" x 5/8"	500
Z-42125	AS610LF	3/16" x 5/8"	250
Z-42130	AS612	3/16" x 3/4"	250
Z-42135	AS612LF	3/16" x 3/4"	250
Z-42140	AS84	1/4" x 1/4"	400
Z-42145	AS86	1/4" x 3/8"	350
Z-42150	AS88	1/4" x 1/2"	300



## Abrazadera Tipo Omega

Acabado galvanizado



Código	Medida
ZC-07010	1/2"
ZC-07012	3/4"
ZC-07014	1"
ZC-07016	1-1/4"
ZC-07018	1-1/2"
ZC-07020	2"

## Abrazadera Tipo Uña



Código	Medida
ZC-09014	1"
ZC-09016	1-1/4"
ZC-09018	1-1/2"
ZC-09020	2"



## Abrazadera Colgante Tipo Pera

Acabado galvanizado



Código	Medida	MIN
ZC-03010	1/2"	-
ZC-03012	3/4"	-
ZC-03014	1"	-
ZC-03016	1-1/4"	-
ZC-03020	2"	90
ZC-03022	3"	40
ZC-03024	4"	25



## Abrazadera Tipo "U" con Tuerca Galvanizada



Código	Medidas	MIN
ZC-01010	1/2" x 1/4"	100
ZC-01012	3/4" x 1/4"	100
ZC-01014	1" x 1/4"	15
ZC-01016	1-1/4" x 5/16"	15
ZC-01018	1-1/2" x 5/16"	10
ZC-01020	2" x 3/8"	10
ZC-01022	3" x 1/2"	10
ZC-01024	4" x 1/2"	10



## Mordaza Dentada para Varilla 3/8"-16

Puede suspender varillas roscadas de 1/4" y 3/8" simultáneamente

Puede sostener cables de acero para la suspensión de lámparas  
Ideal para la suspensión de tuberías de acero y hierro fundido  
Acero galvanizado



Código	Medida	MIN
ZC-05010	3/8"-16	220



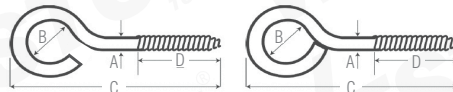
## Armella con Tuerca Galvanizada Fraccional

Código	Medidas	MIN	Código	Medidas	MIN
ZC-15010	3/16"-24 x 3"	100	ZC-15022	3/8"-16 x 4"	50
ZC-15012	3/16"-24 x 4"	100	ZC-15024	3/8"-16 x 6"	50
ZC-15014	1/4"-20 x 3"	100	ZC-15026	3/8"-16 x 8"	50
ZC-15016	1/4"-20 x 4"	100	ZC-15028	1/2"-13 x 4"	50
ZC-15018	5/16"-18 x 4"	50	ZC-15030	1/2"-13 x 6"	25
ZC-15020	5/16"-18 x 6"	50	ZC-15032	1/2"-13 x 8"	25



## Armella Galvanizada

Acabado galvanizado



Abierta	Modelo	Medidas (mm)				MIN
		A	B	C	D	
ZC-11010	15x30	2.00	7	23	8	100
ZC-11012	17x40	2.50	10	30	10	100
ZC-11014	18x50	3.00	12.5	38.1	10.5	100
ZC-11016	19x60	3.30	12.5	43.8	15.6	100
ZC-11018	20x70	4.00	15	48	15	100
ZC-11020	21x80	4.00	18	55	19	100
ZC-11022	22x90	4.30	20	59	19	100
ZC-11024	22x100	4.85	22	70	22	50
ZC-11026	23x110	5.20	25	80	32	50
ZC-11035	23x120	5.3	31	120	33	50
ZC-11028	25x130	6.30	32	105	38	100
ZC-11030	25x150	6.30	32.3	112	37	100
ZC-11036	24x120	5.7	34.6	137	46	50
ZC-11037	24x130	6	40.6	178	40	50
ZC-11038	25x160	6.5	46.6	180	50	50



## Gancho Tipo "S" Galvanizado



Código	ØA	Medidas (mm)			MIN
		B	C	D	
ZC-17010	3	25	3	6	100
ZC-17012	5	40	5	12	100
ZC-17014	6	55	13	15	100
ZC-17016	8	70	15	19	50

Cerrada	Modelo	Medidas (mm)				MIN
		A	B	C	D	
ZC-13010	15x30	2.00	7	23	8	100
ZC-13012	17x40	2.50	5	26	10	100
ZC-13014	18x50	3.00	7	34	17	100
ZC-13016	19x60	3.30	10	37	12	100
ZC-13018	20x70	4.00	12	45	16	100
ZC-13020	21x80	4.00	12	51	16	100
ZC-13022	22x90	4.30	16	55	16	100
ZC-13024	22x100	4.30	16	60	16	100
ZC-13026	23x110	4.85	15	65	25	50
ZC-13028	24x120	6.00	16	73	32	50
ZC-13030	25x130	6.00	21.1	82.8	38.6	50
ZC-13032	25x150	6.00	20	92	38	50
ZC-13035	24x110	5.3	20.3	104	35	100
ZC-13036	25x160	5.8	25.5	105	45	100
ZC-13037	25x170	6	31.5	138	40	50
ZC-13038	26x180	6.5	36.5	125	50	50
ZC-13039	26x190	6.5	36.5	148	50	50

### Sujetador Mariposa



Código	Medidas	MIN
Z-39500	1/8" x 3"	200
Z-39505	3/16" x 3"	100
Z-39510	1/4" x 3"	100



### Identificador de Tuercas y Tornillos

Medidas fraccional y métrico  
Revestimiento de zinc y acero  
Para medir tuercas, pernos y tornillos



Código	Tipo	Rango estándar	Rango métrico
● STW-7360	Estándar	1-64 a 5-40	M1.2-0.25 a M3.5-0.35
● STW-7370	Jumbo	6-32 a 1/2"-13	M4-0.7 a M12-1.75
● STW-7380	Micro	5/8"-11 a 1"-12	M14-1.5 a M24-3.0



### Extractor de Tornillos AAV

Acero Alta Velocidad



Código	Medidas
ST-5-153-10010	# 1
ST-5-153-10015	# 2
ST-5-153-10020	# 3
ST-5-153-10025	# 4
ST-5-153-10030	# 5
ST-5-153-10035	# 6
ST-5-153-10040	# 7
ST-5-153-10045	# 8
ST-5-153-10070	Juego de 5 piezas #1 - #5
ST-5-153-10080	Juego de 6 piezas #1 - #6



### Extractor Recto para Tornillo

Acero Alta Velocidad



Código	Medidas
● ST-8-153-125	3/4"
● ST-8-153-130	7/8"
● ST-8-153-135	1-1/8"



### Perno

Venta MIN bolsita con 2 piezas



Código	Medidas	MIN	CAJA
C-00360	1/4"	1	200
C-00365	5/16"	1	100
C-00370	3/8"	1	100



### Chaveta Tipo R



Código	Medidas	MIN	CAJA
C-00375	1/8"	1	200
C-00380	3/16"	1	150
C-00385	1/4"	1	100
C-00390	5/16"	1	100



### Chaveta Galvanizada



### Anillo de Retención Interno Tipo HO Fraccional

DISPONIBLE: En acero inoxidable VER PÁG. 387



Código	Medidas	MIN
ZB-4940	1/4"	100
ZB-4945	5/16"	100
ZB-4950	3/8"	100
ZB-4955	7/16"	100
ZB-4960	29/64"	100
ZB-4965	1/2"	100
ZB-4970	0.512	100
ZB-4975	9/16"	100
ZB-4980	5/8"	100
ZB-4985	11/16"	100
ZB-4990	3/4"	100
ZB-4995	0.777	100
ZB-5000	13/16"	100
ZB-5005	0.866	100
ZB-5010	0.901	100
ZB-5015	15/16"	100
ZB-5020	1"	100
ZB-5025	1-1/16"	50
ZB-5030	1-1/8"	50
ZB-5035	1-3/16"	50
ZB-5040	1-1/4"	50
ZB-5045	1-5/16"	50
ZB-5050	1-3/8"	50
ZB-5055	1-7/16"	50
ZB-5060	1.456	50
ZB-5065	1-1/2"	50
ZB-5070	1-9/16"	50
ZB-5075	1-5/8"	50
ZB-5080	1.653	50
ZB-5085	1-11/16"	50
ZB-5090	1-3/4"	50
ZB-5095	1-13/16"	50

Código	Medidas	MIN
ZB-5100	1.85	50
ZB-5105	1-7/8"	50
ZB-5110	1-15/16"	50
ZB-5115	2"	50
ZB-5120	2-1/16"	25
ZB-5125	2-1/8"	25
ZB-5130	2-3/16"	25
ZB-5135	2-1/4"	25
ZB-5140	2-5/16"	25
ZB-5145	2-3/8"	25
ZB-5150	2-7/16"	25
ZB-5155	2-1/2"	25
ZB-5160	2-9/16"	25
ZB-5165	2-5/8"	25
ZB-5170	2-11/16"	25
ZB-5175	2-3/4"	25
ZB-5180	2-13/16"	25
ZB-5185	2-7/8"	25
ZB-5190	3"	25
ZB-5195	3-1/16"	10
ZB-5200	3-1/8"	10
ZB-5205	3-5/32"	10
ZB-5210	3-1/4"	10
ZB-5215	3-11/32"	10
ZB-5220	3-15/32"	10
ZB-5225	3-1/2"	10
ZB-5230	3-9/16"	10
ZB-5235	3-5/8"	10
ZB-5240	3-3/4"	10
ZB-5245	3-7/8"	10
ZB-5250	3-15/16"	10
ZB-5255	4"	10

### Anillo de Retención Externo Tipo SH Fraccional

DISPONIBLE: En acero inoxidable VER PÁG. 387



Código	Medidas	MIN
ZB-5370	1/4"	100
ZB-5375	0.276	100
ZB-5380	9/32"	100
ZB-5385	5/16"	100
ZB-5390	11/32"	100
ZB-5395	0.354	100
ZB-5400	3/8"	100
ZB-5405	0.394	100
ZB-5410	13/32"	100
ZB-5415	7/16"	100
ZB-5420	15/32"	100
ZB-5425	1/2"	100
ZB-5430	0.551	100
ZB-5435	9/16"	100
ZB-5440	19/32"	100
ZB-5445	5/8"	100
ZB-5450	43/64"	100
ZB-5455	11/16"	100
ZB-5460	3/4"	100
ZB-5465	25/32"	50
ZB-5470	13/16"	50
ZB-5475	0.844	50
ZB-5480	7/8"	50
ZB-5485	15/16"	50
ZB-5490	63/64"	50
ZB-5495	1"	50
ZB-5500	1.023	50
ZB-5505	1-1/16"	50
ZB-5510	1-1/8"	50
ZB-5515	1-3/16"	50
ZB-5520	1-1/4"	50
ZB-5525	1-5/16"	50
ZB-5530	1-3/8"	50
ZB-5535	1-7/16"	50
ZB-5540	1-1/2"	50
ZB-5545	1-9/16"	50
ZB-5550	1-5/8"	50

Código	Medidas	MIN
ZB-5555	1-11/16"	50
ZB-5560	1-3/4"	50
ZB-5565	1.772	50
ZB-5570	1-13/16"	50
ZB-5575	1-7/8"	50
ZB-5580	1-31/32"	50
ZB-5585	2"	50
ZB-5590	2-1/16"	25
ZB-5595	2-1/8"	25
ZB-5600	2-5/32"	25
ZB-5605	2-1/4"	25
ZB-5610	2-5/16"	25
ZB-5615	2-3/8"	25
ZB-5620	2-7/16"	25
ZB-5625	2-1/2"	25
ZB-5630	2.559	25
ZB-5635	2-5/8"	25
ZB-5640	2-11/16"	25
ZB-5645	2-3/4"	25
ZB-5650	2-7/8"	25
ZB-5655	2-15/16"	25
ZB-5660	3"	25
ZB-5665	3-1/16"	10
ZB-5670	3-1/8"	10
ZB-5675	3-5/32"	10
ZB-5680	3-1/4"	10
ZB-5685	3-11/32"	10
ZB-5690	3-7/16"	10
ZB-5700	3-1/2"	10
ZB-5705	3.543	10
ZB-5710	3-5/8"	10
ZB-5715	3-11/16"	10
ZB-5720	3-3/4"	10
ZB-5725	3-7/8"	10
ZB-5730	3-15/16"	10
ZB-5735	4"	10







### Anillo de Retención Externo Tipo SH Fraccional

Material: Cobre de Berilio



Presentación

Código	Medida	MIN
ZB-5340	1/8"	100
ZB-5345	5/32"	100
ZB-5350	3/16"	100
ZB-5355	0.197	100
ZB-5360	7/32"	100
ZB-5365	15/64"	100



MIN: 100

### Anillo de Retención Externo Tipo E Fraccional



Presentación

Código	Medida
ZB-4880	1/16"
ZB-4885	3/32"
ZB-4890	1/8"
ZB-4895	9/64"
ZB-4900	5/32"
ZB-4905	3/16"
ZB-4910	1/4"



MIN: 100

### Anillo de Retención Externo Tipo SE Fraccional



Presentación

Código	Medida	MIN
ZB-5260	1/16"	100
ZB-5265	3/32"	100
ZB-5270	0.11	100
ZB-5275	1/8"	100
ZB-5280	9/64"	100
ZB-5285	5/32"	100
ZB-5290	11/64"	100
ZB-5295	3/16"	100



Código	Medida	MIN
ZB-5300	7/32"	100
ZB-5305	5/16"	100
ZB-5310	3/8"	100
ZB-5315	7/16"	100
ZB-5320	3/4"	100
ZB-5325	1"	100
ZB-5330	1.188	50
ZB-5335	1.375	50

**TAMBIÉN  
CONTAMOS CON:**

### PINZAS PARA ANILLOS DE RETENCIÓN



Ver página 327

### Anillo de Retención Externo Tipo C Fraccional

**DISPONIBLE:**  
En acero inoxidable  
VER PÁG. 387

Código	Medida	MIN
ZB-4000	1/4"	100
ZB-4005	9/32"	100
ZB-4015	5/16"	100
ZB-4020	3/8"	100
ZB-4025	13/32"	100
ZB-4030	7/16"	100
ZB-4035	1/2"	100
ZB-4040	9/16"	50
ZB-4045	5/8"	50



Presentación

### Anillo de Retención Interno Tipo DH0 Métrico

Código	Medida	MIN
ZB-4180	8 mm	100
ZB-4185	9 mm	100
ZB-4190	10 mm	100
ZB-4195	11 mm	100
ZB-4200	12 mm	100
ZB-4205	13 mm	100
ZB-4210	14 mm	100
ZB-4215	15 mm	100
ZB-4220	16 mm	100
ZB-4225	17 mm	100
ZB-4230	18 mm	100
ZB-4235	19 mm	100
ZB-4240	20 mm	100
ZB-4245	21 mm	100
ZB-4250	22 mm	100
ZB-4255	23 mm	100
ZB-4260	24 mm	100
ZB-4265	25 mm	100
ZB-4270	26 mm	100
ZB-4275	27 mm	100
ZB-4280	28 mm	100
ZB-4285	29 mm	100
ZB-4290	30 mm	100
ZB-4295	31 mm	50
ZB-4300	32 mm	50
ZB-4305	33 mm	50
ZB-4310	34 mm	50
ZB-4315	35 mm	50
ZB-4320	36 mm	50
ZB-4325	37 mm	50
ZB-4330	38 mm	50
ZB-4335	39 mm	50
ZB-4340	40 mm	50
ZB-4345	41 mm	50
ZB-4350	42 mm	50
ZB-4355	43 mm	50
ZB-4360	44 mm	50



Presentación

Código	Medida	MIN
ZB-4365	45 mm	50
ZB-4370	46 mm	50
ZB-4375	47 mm	50
ZB-4380	48 mm	50
ZB-4385	50 mm	50
ZB-4390	51 mm	25
ZB-4395	52 mm	25
ZB-4400	53 mm	25
ZB-4405	54 mm	25
ZB-4410	55 mm	25
ZB-4415	56 mm	25
ZB-4420	57 mm	25
ZB-4425	58 mm	25
ZB-4430	60 mm	25
ZB-4435	62 mm	25
ZB-4440	63 mm	25
ZB-4445	64 mm	25
ZB-4450	65 mm	25
ZB-4455	67 mm	25
ZB-4460	68 mm	25
ZB-4465	70 mm	25
ZB-4470	72 mm	25
ZB-4475	75 mm	25
ZB-4480	76 mm	10
ZB-4485	78 mm	10
ZB-4490	80 mm	10
ZB-4495	81 mm	10
ZB-4500	82 mm	10
ZB-4505	85 mm	10
ZB-4510	88 mm	10
ZB-4515	90 mm	10
ZB-4520	92 mm	10
ZB-4525	95 mm	10
ZB-4530	98 mm	10
ZB-4535	100 mm	10
ZB-4540	102 mm	10

### Anillo de Retención Externo Tipo DSH Métrico

Código	Medida	MIN
ZB-4545	3 mm	100
ZB-4550	4 mm	100
ZB-4555	5 mm	100
ZB-4560	6 mm	100
ZB-4565	7 mm	100
ZB-4570	8 mm	100
ZB-4575	9 mm	100
ZB-4580	10 mm	100
ZB-4585	11 mm	100
ZB-4590	12 mm	100
ZB-4595	13 mm	100
ZB-4600	14 mm	100
ZB-4605	15 mm	100
ZB-4610	16 mm	100
ZB-4615	17 mm	100
ZB-4620	18 mm	100
ZB-4625	19 mm	100
ZB-4630	20 mm	100
ZB-4635	21 mm	100
ZB-4640	23 mm	100
ZB-4645	24 mm	100
ZB-4650	25 mm	100
ZB-4655	26 mm	100
ZB-4660	27 mm	100
ZB-4665	28 mm	100
ZB-4670	29 mm	100
ZB-4675	30 mm	100
ZB-4680	31 mm	50
ZB-4685	32 mm	50
ZB-4690	33 mm	50
ZB-4695	34 mm	50
ZB-4700	35 mm	50
ZB-4705	36 mm	50
ZB-4710	37 mm	50



Presentación

Código	Medida	MIN
ZB-4715	38 mm	50
ZB-4720	39 mm	50
ZB-4725	40 mm	50
ZB-4730	41 mm	50
ZB-4735	42 mm	50
ZB-4740	44 mm	50
ZB-4745	45 mm	50
ZB-4750	46 mm	50
ZB-4755	47 mm	50
ZB-4760	48 mm	50
ZB-4765	50 mm	50
ZB-4770	52 mm	25
ZB-4775	54 mm	25
ZB-4780	55 mm	25
ZB-4785	56 mm	25
ZB-4790	57 mm	25
ZB-4795	58 mm	25
ZB-4800	60 mm	25
ZB-4805	62 mm	25
ZB-4810	63 mm	25
ZB-4815	65 mm	25
ZB-4820	67 mm	25
ZB-4825	68 mm	25
ZB-4830	70 mm	25
ZB-4835	72 mm	10
ZB-4840	75 mm	10
ZB-4845	78 mm	10
ZB-4850	80 mm	10
ZB-4855	82 mm	10
ZB-4860	85 mm	10
ZB-4865	90 mm	10
ZB-4870	95 mm	10
ZB-4875	100 mm	10

### Anillo de Retención Externo Tipo DE Métrico

Código	Medida	MIN
ZB-4095	1.2mm	100
ZB-4100	1.5mm	100
ZB-4105	1.9mm	100
ZB-4110	2.3mm	100
ZB-4115	3.2mm	100
ZB-4120	4mm	100
ZB-4125	5mm	100
ZB-4130	6mm	100
ZB-4135	7mm	100



Presentación

Código	Medida	MIN
ZB-4140	8mm	100
ZB-4145	9mm	100
ZB-4150	10mm	100
ZB-4155	12mm	100
ZB-4160	15mm	100
ZB-4165	19mm	100
ZB-4170	24mm	100
ZB-4175	30mm	100



## Juego de Tornillos Phillips Cabeza Plana Métrico

Acero al carbón negro

Variedad de pequeños tornillos que se utilizan en laptops, tablets y otros equipos electrónicos

Estuche práctico con divisiones para mantenerlos organizados

Medidas:

- |           |          |
|-----------|----------|
| M1.4 - 4  | M1.4 - 8 |
| M1.7 - 4  | M1.7 - 6 |
| M2 - 4    | M2 - 8   |
| M2.5 - 4  | M2.5 - 6 |
| M2.5 - 10 | M3 - 4   |
| M3 - 8    | M3 - 12  |
| M1.4 - 6  | M3 - 16  |
| M1.7 - 5  | M1.7 - 8 |
| M2 - 6    | M2 - 10  |
| M2.5 - 5  | M2.5 - 8 |
| M2.5 - 12 | M3 - 6   |
| M3 - 10   | M3 - 14  |

24 Medidas



Estuche plástico colgante  
MIN: 1 / CAJA: 50

Código	Contenido
ZN-33000	30 piezas por medida (720 piezas)

## Juego de Anillos de Retención

Incluye:

EXTERNO:

- 20 pzas. de 1/4"
- 20 pzas. de 5/16"
- 20 pzas. de 3/8"
- 20 pzas. de 7/16"
- 20 pzas. de 1/2"
- 20 pzas. de 9/16"
- 20 pzas. de 5/8"
- 20 pzas. de 3/4"
- 15 pzas. de 13/16"
- 15 pzas. de 7/8"
- 15 pzas. de 1"
- 5 pzas. de 1-1/4"

INTERNO:

- 15 pzas. de 1/2"
- 15 pzas. de 9/16"
- 15 pzas. de 5/8"
- 15 pzas. de 3/4"
- 15 pzas. de 13/16"
- 15 pzas. de 7/8"



Estuche plástico

Código	Contenido
A-16430	300 piezas

## Juego de Empaques de Hule

Incluye:

- |                        |                   |
|------------------------|-------------------|
| ARANDELA               | TAPÓN             |
| 15 pzas. de 1/8"x1/4"  | 20 pzas. de 9/32" |
| 10 pzas. de 7/32"x1/2" | 20 pzas. de 3/8"  |
| 7 pzas. de 9/32"x1/2"  | 10 pzas. de 1/2"  |
| 3 pzas. de 5/16"x9/16" | 5 pzas. de 5/8"   |
| 6 pzas. de 3/8"x15/32" | 4 pzas. de 3/4"   |
| 5 pzas. de 3/8"x1/2"   | 3 pzas. de 7/8"   |
| 3 pzas. de 3/8"x13/16" | 2 pzas. de 1"     |
| 4 pzas. de 7/16"x3/4"  |                   |
| 3 pzas. de 1/2"x19/32" |                   |
| 3 pzas. de 5/8"x31/32" |                   |
| 2 pzas. de 3/4"x15/16" |                   |



Estuche plástico

Código	Contenido
A-16465	125 piezas

## Juego de Cuñas

Incluye:

- 4 pzas. de 1/8"x1/8"x3/4"
- 4 pzas. de 1/8"x1/8"x1"
- 5 pzas. de 3/16"x3/16"x3/4"
- 5 pzas. de 3/16"x3/16"x1"
- 5 pzas. de 3/16"x3/16"x1-1/4"
- 5 pzas. de 1/4"x1/4"x3/4"
- 5 pzas. de 1/4"x1/4"x1-1/4"
- 5 pzas. de 1/4"x1/4"x1-1/2"
- 5 pzas. de 5/16"x5/16"x1-1/2"
- 5 pzas. de 5/16"x5/16"x1-1/4"
- 5 pzas. de 3/8"x3/8"x1-1/4"
- 5 pzas. de 3/8"x3/8"x1-1/2"
- 2 pzas. de 1/2"x1/2"x1-1/2"



Estuche plástico

Código	Contenido
A-16450	60 piezas

## Juego de Cuñas Media Luna

Incluye:

- 10 pzas. de 1/8"x13/64"x33/64"
- 10 pzas. de 1/8"x1/4"x5/8"
- 10 pzas. de 5/32"x19/64"x3/4"
- 10 pzas. de 5/32"x1/4"x5/8"
- 10 pzas. de 5/32"x13/64"x33/64"
- 10 pzas. de 13/64"x19/64"x3/4"
- 10 pzas. de 13/64"x23/64"x7/8"
- 10 pzas. de 15/64"x23/64"x7/8"



Estuche plástico

Código	Contenido
A-16440	80 piezas

## Juego de Clips "E"

Incluye:

- 30 pzas. de 1/16"
- 30 pzas. de 1/8"
- 40 pzas. de 3/16"
- 50 pzas. de 1/4"
- 50 pzas. de 3/8"
- 40 pzas. de 1/2"
- 20 pzas. de 7/8"
- 20 pzas. de 5/8"
- 20 pzas. de 3/4"



Estuche plástico

Código	Contenido
A-16445	300 piezas

## Juego de Chavetas

Incluye:

- 150 pzas. de 1/16" x 1"
- 150 pzas. de 3/32" x 1"
- 100 pzas. de 3/32" x 1-1/2"
- 75 pzas. de 1/8" x 1-1/4"
- 50 pzas. de 1/8" x 2"
- 30 pzas. de 5/32" x 2-1/2"



Estuche plástico

Código	Contenido
A-16400	555 piezas





## Juego de Pernos

Incluye:  
42 pzas. de 3/32" x 1-3/16"  
30 pzas. de 5/64" x 1-5/16"  
25 pzas. de 5/64" x 1-9/16"  
25 pzas. de 7/64" x 1-5/8"  
20 pzas. 9/64" x 1-3/4"  
8 pzas. de 5/32" x 2-15/16"



Estuche plástico

Código	Contenido
A-16415	150 piezas

## Juego de Perno con Hoyo

Incluye:  
10 pzas. de 7/16" x 1-3/4"  
6 pzas. de 5/16" x 1-3/4"  
18 pzas. de 1/4" x 1-3/4"  
16 pzas. de 3/16" x 1-7/16"



Estuche plástico

Código	Contenido
A-16405	50 piezas

## Juego Surtido para Taller

Incluye:  
CUÑA MEDIA LUNA  
25pzas. de 3/32" x 3/8"  
25 pzas. de 3/32" x 1/2"  
25 pzas. de 1/8" x 1/2"  
40 pzas. de 1/8" x 5/8"  
50 pzas. de 5/32" x 5/8"  
25 pzas. de 3/16" x 3/4"  
CLIP E  
25 pzas. de 1/4"  
25 pzas. de 3/8"  
PERNO ROLL PIN  
20 pzas. de 1/8" x 5/8"  
20 pzas. de 1/8" x 1"  
20 pzas. de 5/32" x 5/8"  
20 pzas. de 5/32" x 1"  
20 pzas. de 3/16" x 5/8"  
20 pzas. de 3/16" x 1"

ANILLO DE RETENCIÓN EXTERNO  
25 pzas. de 3/8"  
25 pzas. de 1/2"  
25 pzas. de 5/8"  
25 pzas. de 3/4"



Estuche plástico

Código	Contenido
A-16435	460 piezas

## Juego de O-Rings



## O-Ring

Disponibles en medidas fraccionales y métricas



Métrico	ØInterior	Espesor	MIN
● A-16475-005	3 mm	1.50 mm	500
● A-16475-010	4.4 mm	2 mm	500
● A-16475-025	10 mm	1.50 mm	500
● A-16475-030	11 mm	1.50 mm	500
● A-16475-050	18 mm	2.50 mm	500
● A-16475-060	21 mm	2.50 mm	200
● A-16475-065	22 mm	2.50 mm	200
● A-16475-070	18 mm	3.50 mm	500
● A-16475-080	22 mm	3.50 mm	200
● A-16475-085	23.5 mm	3.50 mm	200
● A-16475-090	25 mm	3.50 mm	200
● A-16475-095	26.5 mm	3.50 mm	200
● A-16475-100	28 mm	3.50 mm	200
● A-16475-105	30 mm	3.50 mm	200
● A-16475-110	31 mm	3.50 mm	200
● A-16475-115	33 mm	3.50 mm	200
● A-16475-120	34.5 mm	3.50 mm	200
● A-16475-125	36 mm	3.50 mm	200
● A-16475-130	38 mm	3.50 mm	200
● A-16475-135	41 mm	3.50 mm	200
● A-16475-140	44 mm	3.50 mm	200
● A-16475-145	47 mm	3.50 mm	200
● A-16475-150	50 mm	3.50 mm	200

Código	Medidas	Contenido
A-16470	Fraccional	407 piezas
A-16475	Métrico	419 piezas

## Juego de Perno Roll Pin

Incluye:  
10 pzas. de 1/16" x 3/16"  
10 pzas. de 1/16" x 3/4"  
10 pzas. de 1/16" x 5/16"  
10 pzas. de 5/32" x 5/8"  
10 pzas. de 5/32" x 1"  
10 pzas. de 5/32" x 1-1/2"  
10 pzas. de 5/64" x 1/4"  
10 pzas. de 5/64" x 1/2"  
10 pzas. de 5/64" x 1"  
15 pzas. de 1/8" x 5/8"  
15 pzas. de 1/8" x 1"  
15 pzas. de 1/8" x 1-1/4"  
10 pzas. de 3/32" x 5/8"  
10 pzas. de 3/32" x 1"  
10 pzas. de 3/32" x 1-1/4"

15 pzas. de 3/16" x 5/8"  
15 pzas. de 3/16" x 1"  
15 pzas. de 3/16" x 1-1/4"  
10 pzas. de 7/32" x 5/8"  
10 pzas. de 7/32" x 1-1/4"  
10 pzas. de 7/32" x 1-3/4"  
10 pzas. de 1/4" x 5/8"  
10 pzas. de 1/4" x 1-1/4"  
10 pzas. de 1/4" x 1-3/4"  
10 pzas. de 5/16" x 3/4"  
10 pzas. de 5/16" x 1-1/2"  
10 pzas. de 5/16" x 2"  
5 pzas. de 3/8" x 3/4"  
5 pzas. de 3/8" x 1-1/2"  
5 pzas. de 3/8" x 2"



Estuche plástico

Código	Contenido
A-16425	315 piezas

## Juego de Terminales Eléctricas

Incluye:  
4 pzas. de 12-10 ga terminal anillo 55-5  
4 pzas. de 12-10 ga terminal anillo 55-8  
4 pzas. de 12-10 ga terminal anillo 55-10  
5 pzas. de 12-10 ga conector macho  
5 pzas. de 12-10 ga desconector hembra  
12 pzas. de 12-10 ga conector empalme  
10 pzas. de 16-14 ga terminal anillo 2-6  
10 pzas. de 16-14 ga terminal anillo 2-5 L  
10 pzas. de 16-14 ga terminal anillo 2-4 L  
10 pzas. de 16-14 ga desconector hembra  
10 pzas. de 16-14 ga terminal pala 2-4M  
10 pzas. de 16-14 ga conector macho 55-5  
18 pzas. de 18-14 ga conector empalme  
4 pzas. de 18-14 ga conector empalme rápido  
8 pzas. de 22-18 ga terminal anillo 1.25-4 L  
4 pzas. de 22-18 ga conector empalme rápido  
12 pzas. de 22-18 ga conector empalme  
2x10 pzas. de 16-14 ga conector bala macho y desconector hembra



Estuche plástico

Código	Contenido
A-16455	160 piezas



# LÍNEA DE ACERO INOXIDABLE



Fabricados con una **aleación de acero y cromo** que otorga propiedades como: material durable para **uso rudo** y **alta resistencia** a la humedad, a la corrosión y a la oxidación.

Ideales para usarse en: **exteriores**, lugares con alta concentración de **humedad**, **zonas costeras** o cuando se busca un **acabado estético limpio**.

TORNILLOS Y SUJETADORES

## Tornillo Hexagonal Acero Inoxidable Fraccional

Rosca fraccional  
RC: Rosca Completa  
RP: Rosca Parcial



Presentación

## Tornillo Hexagonal Acero Inoxidable Métrico

Rosca métrica  
RC: Rosca Completa



Presentación

Código	Rosca	Medidas	MIN
ZN-30010	RC	1/4"-20 x 1/2"	100
ZN-30012	RC	1/4"-20 x 3/4"	100
ZN-30014	RC	1/4"-20 x 7/8"	100
ZN-30016	RC	1/4"-20 x 1"	100
ZN-30018	RC	1/4"-20 x 1-1/4"	100
ZN-30020	RC	1/4"-20 x 1-1/2"	100
ZN-30022	RC	1/4"-20 x 2"	100
ZN-30024	RC	1/4"-20 x 2-1/2"	100
ZN-30026	RC	1/4"-20 x 3"	100
ZN-30028	RC	1/4"-20 x 3-1/2"	50
ZN-30030	RC	1/4"-20 x 4"	50
ZN-30032	RC	5/16"-18 x 1/2"	100
ZN-30034	RC	5/16"-18 x 3/4"	100
ZN-30036	RC	5/16"-18 x 7/8"	100
ZN-30038	RC	5/16"-18 x 1"	100
ZN-30040	RC	5/16"-18 x 1-1/4"	100
ZN-30042	RC	5/16"-18 x 1-1/2"	100
ZN-30044	RC	5/16"-18 x 2"	100
ZN-30046	RC	5/16"-18 x 2-1/2"	50
ZN-30048	RC	5/16"-18 x 3"	50
ZN-30050	RC	5/16"-18 x 3-1/2"	50
ZN-30052	RC	5/16"-18 x 4"	50
ZN-30054	RC	3/8"-16 x 3/4"	100
ZN-30056	RC	3/8"-16 x 7/8"	100
ZN-30058	RC	3/8"-16 x 1"	100
ZN-30060	RC	3/8"-16 x 1-1/4"	100
ZN-30062	RC	3/8"-16 x 1-1/2"	100
ZN-30064	RC	3/8"-16 x 2"	100
ZN-30066	RC	3/8"-16 x 2-1/2"	50
ZN-30068	RC	3/8"-16 x 3"	50
ZN-30070	RC	3/8"-16 x 3-1/2"	50
ZN-30072	RC	3/8"-16 x 4"	50
ZN-30074	RC	1/2"-13 x 1"	25
ZN-30076	RC	1/2"-13 x 1-1/4"	25

Código	Rosca	Medidas	MIN
ZN-30078	RC	1/2"-13 x 1-1/2"	25
ZN-30080	RC	1/2"-13 x 2"	20
ZN-30082	RC	1/2"-13 x 2-1/2"	20
ZN-30084	RC	1/2"-13 x 3"	20
ZN-30086	RC	1/2"-13 x 3-1/2"	20
ZN-30088	RC	1/2"-13 x 4"	20
ZN-30088-RP	RP	1/2"-13 x 4"	20
ZN-30090	RP	1/2"-13 x 4-1/2"	20
ZN-30092	RP	1/2"-13 x 5"	20
ZN-30094	RP	1/2"-13 x 5-1/2"	20
ZN-30096	RP	1/2"-13 x 6"	20
ZN-30098	RC	5/8"-11 x 1-1/4"	25
ZN-30100	RC	5/8"-11 x 1-1/2"	25
ZN-30102	RC	5/8"-11 x 2"	25
ZN-30104	RC	5/8"-11 x 2-1/2"	20
ZN-30106	RC	5/8"-11 x 3"	20
ZN-30108	RC	5/8"-11 x 3-1/2"	20
ZN-30110	RC	5/8"-11 x 4"	20
ZN-30112	RP	5/8"-11 x 4-1/2"	20
ZN-30114	RP	5/8"-11 x 5"	15
ZN-30116	RP	5/8"-11 x 5-1/2"	15
ZN-30118	RP	5/8"-11 x 6"	15
ZN-30120	RC	3/4"-10 x 1-1/4"	25
ZN-30122	RC	3/4"-10 x 1-1/2"	25
ZN-30124	RC	3/4"-10 x 2"	25
ZN-30126	RC	3/4"-10 x 2-1/2"	20
ZN-30128	RC	3/4"-10 x 3"	20
ZN-30130	RC	3/4"-10 x 3-1/2"	20
ZN-30132	RC	3/4"-10 x 4"	20
ZN-30134	RC	3/4"-10 x 4-1/2"	20
ZN-30136	RP	3/4"-10 x 5"	15
ZN-30138	RP	3/4"-10 x 5-1/2"	15
ZN-30140	RP	3/4"-10 x 6"	15

Código	Rosca	Medidas	MIN
ZN-30310	RC	M6-1.0 x 12 mm	200
ZN-30312	RC	M6-1.0 x 16 mm	200
ZN-30314	RC	M6-1.0 x 20 mm	200
ZN-30316	RC	M6-1.0 x 25 mm	200
ZN-30318	RC	M6-1.0 x 30 mm	200
ZN-30320	RC	M6-1.0 x 35 mm	200
ZN-30322	RC	M6-1.0 x 40 mm	200
ZN-30324	RC	M6-1.0 x 45 mm	200
ZN-30326	RC	M6-1.0 x 50 mm	200
ZN-30328	RC	M8-1.25 x 12 mm	100
ZN-30330	RC	M8-1.25 x 16 mm	100
ZN-30332	RC	M8-1.25 x 20 mm	100
ZN-30334	RC	M8-1.25 x 25 mm	100
ZN-30336	RC	M8-1.25 x 30 mm	100
ZN-30338	RC	M8-1.25 x 35 mm	100
ZN-30340	RC	M8-1.25 x 40 mm	100
ZN-30342	RC	M8-1.25 x 45 mm	100
ZN-30344	RC	M8-1.25 x 50 mm	100
ZN-30346	RC	M8-1.25 x 55 mm	50
ZN-30348	RC	M8-1.25 x 60 mm	50
ZN-30350	RC	M10-1.5 x 20 mm	50
ZN-30352	RC	M10-1.5 x 25 mm	50
ZN-30354	RC	M10-1.5 x 30 mm	50
ZN-30356	RC	M10-1.5 x 35 mm	50
ZN-30358	RC	M10-1.5 x 40 mm	50
ZN-30360	RC	M10-1.5 x 45 mm	50
ZN-30362	RC	M10-1.5 x 50 mm	50
ZN-30364	RC	M10-1.5 x 55 mm	25
ZN-30366	RC	M10-1.5 x 60 mm	25
ZN-30368	RC	M10-1.5 x 65 mm	25
ZN-30370	RC	M10-1.5 x 70 mm	25
ZN-30372	RC	M10-1.5 x 75 mm	25

Código	Rosca	Medidas	MIN
ZN-30374	RC	M10-1.5 x 80 mm	25
ZN-30376	RC	M10-1.5 x 85 mm	25
ZN-30378	RC	M10-1.5 x 90 mm	25
ZN-30380	RC	M10-1.5 x 100 mm	25
ZN-30382	RC	M12-1.75 x 20 mm	50
ZN-30384	RC	M12-1.75 x 25 mm	50
ZN-30386	RC	M12-1.75 x 30 mm	50
ZN-30388	RC	M12-1.75 x 35 mm	50
ZN-30390	RC	M12-1.75 x 40 mm	50
ZN-30392	RC	M12-1.75 x 45 mm	25
ZN-30394	RC	M12-1.75 x 50 mm	25
ZN-30396	RC	M12-1.75 x 55 mm	25
ZN-30398	RC	M12-1.75 x 60 mm	25
ZN-30400	RC	M12-1.75 x 65 mm	25
ZN-30402	RC	M12-1.75 x 70 mm	25
ZN-30404	RC	M12-1.75 x 75 mm	20
ZN-30406	RC	M12-1.75 x 80 mm	20
ZN-30408	RC	M12-1.75 x 85 mm	20
ZN-30410	RC	M12-1.75 x 90 mm	20
ZN-30412	RC	M12-1.75 x 100 mm	20
ZN-30414	RC	M16-2.0 x 40 mm	25
ZN-30416	RC	M16-2.0 x 45 mm	25
ZN-30418	RC	M16-2.0 x 50 mm	25
ZN-30420	RC	M16-2.0 x 55 mm	20
ZN-30422	RC	M16-2.0 x 60 mm	20
ZN-30424	RC	M16-2.0 x 65 mm	20
ZN-30426	RC	M16-2.0 x 70 mm	20
ZN-30428	RC	M16-2.0 x 75 mm	20
ZN-30430	RC	M16-2.0 x 80 mm	20
ZN-30432	RC	M16-2.0 x 85 mm	20
ZN-30434	RC	M16-2.0 x 90 mm	20
ZN-30436	RC	M16-2.0 x 100 mm	20

### Tornillo Allen Cilíndrico Acero Inoxidable Fraccional

Rosca fraccional  
Acero Inoxidable 304  
UNC



Presentación

Código	Medidas	MIN
ZN-31000	#4-40 x 3/8"	100
ZN-31005	#4-40 x 1/2"	100
ZN-31010	#4-40 x 3/4"	100
ZN-31015	#5-40 x 3/8"	100
ZN-31020	#5-40 x 1/2"	100
ZN-31025	#5-40 x 3/4"	100
ZN-31030	#5-40 x 1"	100
ZN-31035	#5-40 x 1-1/4"	100
ZN-31040	#8-32 x 3/8"	100
ZN-31045	#8-32 x 1/2"	100
ZN-31050	#8-32 x 5/8"	100
ZN-31055	#8-32 x 3/4"	100
ZN-31060	#8-32 x 1"	100
ZN-31065	#10-24 x 1/2"	100
ZN-31070	#10-24 x 3/4"	100
ZN-31075	#10-24 x 1"	100
ZN-31080	#10-24 x 1-1/4"	100
ZN-31085	#10-24 x 1-1/2"	100
ZN-31090	#10-24 x 2"	100
ZN-31095	1/4 x 1/2"	100
ZN-31100	1/4 x 3/4"	100
ZN-31105	1/4 x 1"	100
ZN-31110	1/4 x 1-1/4"	100
ZN-31115	1/4 x 1-1/2"	100
ZN-31120	1/4 x 1-3/4"	100
ZN-31125	1/4 x 2"	100
ZN-31130	1/4 x 2-1/2"	100
ZN-31135	1/4 x 3"	50

Código	Medidas	MIN
ZN-31140	5/16 x 1/2"	100
ZN-31145	5/16 x 3/4"	100
ZN-31150	5/16 x 1"	100
ZN-31155	5/16 x 1-1/4"	100
ZN-31160	5/16 x 1-1/2"	100
ZN-31165	5/16 x 1-3/4"	100
ZN-31170	5/16 x 2"	50
ZN-31175	5/16 x 2-1/2"	50
ZN-31180	5/16 x 3"	50
ZN-31185	3/8 x 3/4"	50
ZN-31190	3/8 x 1"	50
ZN-31195	3/8 x 1-1/4"	50
ZN-31200	3/8 x 1-1/2"	50
ZN-31205	3/8 x 1-3/4"	50
ZN-31210	3/8 x 2"	50
ZN-31215	3/8 x 2-1/2"	50
ZN-31220	3/8 x 3"	25
ZN-31225	3/8 x 3-1/2"	25
ZN-31230	3/8 x 4"	25
ZN-31235	1/2 x 1"	25
ZN-31240	1/2 x 1-1/4"	25
ZN-31245	1/2 x 1-1/2"	25
ZN-31250	1/2 x 1-3/4"	25
ZN-31255	1/2 x 2"	25
ZN-31260	1/2 x 2-1/2"	25
ZN-31265	1/2 x 3"	25
ZN-31270	1/2 x 3-1/2"	25
ZN-31275	1/2 x 4"	25

### Tornillo Allen Cilíndrico Acero Inoxidable Métrico

Rosca métrica  
Acero Inoxidable 304  
DIN 912



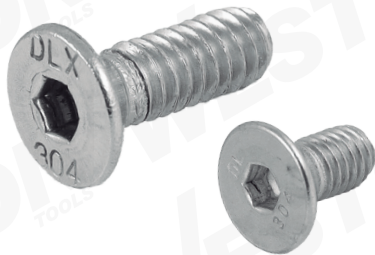
Presentación

Código	Medidas	MIN
ZN-31400	M3-0.50 x 6 mm	100
ZN-31405	M3-0.50 x 8 mm	100
ZN-31410	M3-0.50 x 10 mm	100
ZN-31415	M3-0.50 x 12 mm	100
ZN-31420	M3-0.50 x 16 mm	100
ZN-31425	M3-0.50 x 20 mm	100
ZN-31430	M4-0.70 x 8 mm	100
ZN-31435	M4-0.70 x 10 mm	100
ZN-31440	M4-0.70 x 12 mm	100
ZN-31445	M4-0.70 x 16 mm	100
ZN-31450	M4-0.70 x 20 mm	100
ZN-31455	M4-0.70 x 25 mm	100
ZN-31460	M4-0.70 x 30 mm	100
ZN-31465	M4-0.70 x 35 mm	100
ZN-31470	M4-0.70 x 40 mm	100
ZN-31475	M5-0.80 x 10 mm	100
ZN-31480	M5-0.80 x 12 mm	100
ZN-31485	M5-0.80 x 16 mm	100
ZN-31490	M5-0.80 x 20 mm	100
ZN-31495	M5-0.80 x 25 mm	100
ZN-31500	M5-0.80 x 30 mm	100
ZN-31505	M5-0.80 x 35 mm	100
ZN-31510	M5-0.80 x 40 mm	100
ZN-31515	M6-1.00 x 10 mm	100
ZN-31520	M6-1.00 x 12 mm	100
ZN-31525	M6-1.00 x 16 mm	100
ZN-31530	M6-1.00 x 20 mm	100
ZN-31535	M6-1.00 x 25 mm	100
ZN-31540	M6-1.00 x 30 mm	100
ZN-31545	M6-1.00 x 35 mm	100
ZN-31550	M6-1.00 x 40 mm	100
ZN-31555	M6-1.00 x 45 mm	100

Código	Medidas	MIN
ZN-31560	M8-1.00 x 50 mm	100
ZN-31565	M8-1.25 x 12 mm	100
ZN-31570	M8-1.25 x 16 mm	100
ZN-31575	M8-1.25 x 20 mm	100
ZN-31580	M8-1.25 x 25 mm	100
ZN-31585	M8-1.25 x 30 mm	100
ZN-31590	M8-1.25 x 35 mm	100
ZN-31595	M8-1.25 x 40 mm	50
ZN-31600	M8-1.25 x 45 mm	50
ZN-31605	M8-1.25 x 50 mm	50
ZN-31610	M8-1.25 x 60 mm	50
ZN-31615	M8-1.25 x 70 mm	50
ZN-31620	M10-1.50 x 20 mm	50
ZN-31625	M10-1.50 x 25 mm	50
ZN-31630	M10-1.50 x 30 mm	50
ZN-31635	M10-1.50 x 35 mm	50
ZN-31640	M10-1.50 x 40 mm	50
ZN-31645	M10-1.50 x 45 mm	50
ZN-31650	M10-1.50 x 50 mm	50
ZN-31655	M10-1.50 x 60 mm	50
ZN-31660	M10-1.50 x 70 mm	50
ZN-31665	M10-1.50 x 80 mm	25
ZN-31670	M12-1.75 x 25 mm	25
ZN-31675	M12-1.75 x 30 mm	25
ZN-31680	M12-1.75 x 35 mm	25
ZN-31685	M12-1.75 x 40 mm	25
ZN-31690	M12-1.75 x 45 mm	25
ZN-31695	M12-1.75 x 50 mm	25
ZN-31700	M12-1.75 x 60 mm	25
ZN-31705	M12-1.75 x 70 mm	25
ZN-31710	M12-1.75 x 80 mm	25

### Tornillo Allen Cabeza Plana Acero Inoxidable Fraccional

Rosca fraccional  
Acero Inoxidable 304



Presentación

Código	Medidas	MIN
ZN-31800	#8 x 3/8"	100
ZN-31805	#8 x 1/2"	100
ZN-31810	#8 x 3/4"	100
ZN-31815	#8 x 1"	100
ZN-31820	#10 x 1/2"	100
ZN-31825	#10 x 3/4"	100
ZN-31830	#10 x 1"	100
ZN-31835	#10 x 1-1/4"	100
ZN-31840	#10 x 1-1/2"	100
ZN-31845	1/4 x 1/2"	100
ZN-31850	1/4 x 3/4"	100
ZN-31855	1/4 x 1"	100
ZN-31860	1/4 x 1-1/4"	100
ZN-31865	1/4 x 1-1/2"	100

Código	Medidas	MIN
ZN-31870	1/4 x 2"	100
ZN-31875	5/16 x 1/2"	100
ZN-31880	5/16 x 3/4"	100
ZN-31885	5/16 x 1"	100
ZN-31890	5/16 x 1-1/4"	50
ZN-31895	5/16 x 1-1/2"	50
ZN-31900	5/16 x 2"	50
ZN-31905	3/8 x 3/4"	100
ZN-31910	3/8 x 1"	100
ZN-31915	3/8 x 1-1/4"	50
ZN-31920	3/8 x 1-1/2"	50
ZN-31925	3/8 x 2"	50
ZN-31930	3/8 x 2-1/2"	50
ZN-31935	3/8 x 3"	50

### Tornillo Allen Cabeza Plana Acero Inoxidable Métrico

Rosca métrica  
Acero Inoxidable 304  
DIN 7991



Presentación

Código	Medidas	MIN
ZN-32000	M4-0.70 x 8 mm	100
ZN-32005	M4-0.70 x 10 mm	100
ZN-32010	M4-0.70 x 12 mm	100
ZN-32015	M4-0.70 x 16 mm	100
ZN-32020	M4-0.70 x 20 mm	100
ZN-32025	M4-0.70 x 25 mm	100
ZN-32030	M4-0.70 x 30 mm	100
ZN-32035	M4-0.70 x 40 mm	100
ZN-32040	M5-0.80 x 8 mm	100
ZN-32045	M5-0.80 x 10 mm	100
ZN-32050	M5-0.80 x 12 mm	100
ZN-32055	M5-0.80 x 16 mm	100
ZN-32060	M5-0.80 x 20 mm	100
ZN-32065	M5-0.80 x 25 mm	100
ZN-32070	M5-0.80 x 30 mm	100
ZN-32075	M5-0.80 x 40 mm	100
ZN-32080	M6-1.00 x 10 mm	100
ZN-32085	M6-1.00 x 12 mm	100
ZN-32090	M6-1.00 x 16 mm	100
ZN-32095	M6-1.00 x 20 mm	100
ZN-32100	M6-1.00 x 25 mm	100
ZN-32105	M6-1.00 x 30 mm	100
ZN-32110	M6-1.00 x 35 mm	100
ZN-32115	M6-1.00 x 40 mm	100

Código	Medidas	MIN
ZN-32120	M6-1.00 x 50 mm	100
ZN-32125	M8-1.25 x 10 mm	100
ZN-32130	M8-1.25 x 16 mm	100
ZN-32135	M8-1.25 x 20 mm	100
ZN-32140	M8-1.25 x 25 mm	100
ZN-32145	M8-1.25 x 30 mm	100
ZN-32150	M8-1.25 x 35 mm	100
ZN-32155	M8-1.25 x 40 mm	50
ZN-32160	M8-1.25 x 45 mm	50
ZN-32165	M8-1.25 x 50 mm	50
ZN-32170	M10-1.50 x 20 mm	50
ZN-32175	M10-1.50 x 25 mm	50
ZN-32180	M10-1.50 x 30 mm	50
ZN-32185	M10-1.50 x 35 mm	50
ZN-32190	M10-1.50 x 40 mm	50
ZN-32195	M10-1.50 x 45 mm	50
ZN-32200	M10-1.50 x 50 mm	50
ZN-32210	M12-1.75 x 25 mm	25
ZN-32215	M12-1.75 x 30 mm	25
ZN-32220	M12-1.75 x 35 mm	25
ZN-32225	M12-1.75 x 40 mm	25
ZN-32230	M12-1.75 x 45 mm	25
ZN-32235	M12-1.75 x 50 mm	25

### Tornillo Allen Cabeza de Botón Acero Inoxidable Fraccional

Rosca fraccional  
Acero Inoxidable 304



Código	Medidas	MIN
ZN-32300	#5 x 1/4"	100
ZN-32305	#5 x 3/8"	100
ZN-32310	#5 x 1/2"	100
ZN-32315	#5 x 3/4"	100
ZN-32320	#8 x 1/4"	100
ZN-32325	#8 x 3/8"	100
ZN-32330	#8 x 1/2"	100
ZN-32335	#8 x 3/4"	100
ZN-32340	#8 x 1"	100
ZN-32345	#10 x 1/4"	100
ZN-32350	#10 x 3/8"	100
ZN-32355	#10 x 1/2"	100
ZN-32360	#10 x 3/4"	100
ZN-32365	#10 x 1"	100

Código	Medidas	MIN
ZN-32370	#10 x 1-1/4"	100
ZN-32375	1/4 x 3/8"	100
ZN-32380	1/4 x 1/2"	100
ZN-32385	1/4 x 3/4"	100
ZN-32390	1/4 x 1"	100
ZN-32395	1/4 x 1-1/4"	100
ZN-32400	1/4 x 1-1/2"	100
ZN-32405	5/16 x 3/4"	100
ZN-32410	5/16 x 1"	100
ZN-32415	5/16 x 1-1/4"	50
ZN-32420	5/16 x 1-1/2"	50
ZN-32425	3/8 x 1"	50
ZN-32430	3/8 x 1-1/2"	50

### Tornillo Allen Cabeza de Botón Acero Inoxidable Métrico

Rosca métrica  
Acero Inoxidable 304



Código	Medidas	MIN
ZN-32500	M4-0.70 x 6 mm	100
ZN-32505	M4-0.70 x 8 mm	100
ZN-32510	M4-0.70 x 10 mm	100
ZN-32515	M4-0.70 x 12 mm	100
ZN-32520	M4-0.70 x 16 mm	100
ZN-32525	M4-0.70 x 20 mm	100
ZN-32530	M4-0.70 x 25 mm	100
ZN-32535	M4-0.70 x 30 mm	100
ZN-32540	M4-0.70 x 40 mm	100
ZN-32545	M5-0.80 x 10 mm	100
ZN-32550	M5-0.80 x 12 mm	100
ZN-32555	M5-0.80 x 16 mm	100
ZN-32560	M5-0.80 x 20 mm	100
ZN-32565	M5-0.80 x 25 mm	100
ZN-32570	M5-0.80 x 30 mm	100
ZN-32575	M5-0.80 x 40 mm	100

Código	Medidas	MIN
ZN-32580	M6-1.00 x 12 mm	100
ZN-32585	M6-1.00 x 16 mm	100
ZN-32590	M6-1.00 x 20 mm	100
ZN-32595	M6-1.00 x 25 mm	100
ZN-32600	M6-1.00 x 30 mm	100
ZN-32605	M8-1.25 x 16 mm	100
ZN-32610	M8-1.25 x 20 mm	100
ZN-32615	M8-1.25 x 25 mm	100
ZN-32620	M8-1.25 x 30 mm	100
ZN-32625	M8-1.25 x 35 mm	100
ZN-32630	M10-1.50 x 20 mm	50
ZN-32635	M10-1.50 x 25 mm	50
ZN-32640	M10-1.50 x 30 mm	50
ZN-32645	M10-1.50 x 35 mm	50
ZN-32650	M10-1.50 x 40 mm	50

### Opresor Allen Acero Inoxidable Fraccional

Rosca fraccional



Código	Medidas	MIN
ZE-30010	#8-32 x 3/16"	200
ZE-30012	#8-32 x 1/4"	200
ZE-30014	#8-32 x 3/8"	200
ZE-30016	#10-24 x 3/16"	100
ZE-30018	#10-24 x 1/4"	100
ZE-30020	#10-24 x 5/16"	100
ZE-30022	#10-24 x 3/8"	100
ZE-30024	1/4"-20 x 5/16"	100
ZE-30026	1/4"-20 x 3/8"	100
ZE-30028	1/4"-20 x 1/2"	100
ZE-30030	1/4"-20 x 5/8"	100

Código	Medidas	MIN
ZE-30032	5/16"-18 x 5/16"	100
ZE-30034	5/16"-18 x 3/8"	100
ZE-30036	5/16"-18 x 1/2"	100
ZE-30038	5/16"-18 x 3/4"	100
ZE-30040	3/8"-16 x 1/2"	50
ZE-30042	3/8"-16 x 3/4"	50
ZE-30044	1/2"-13 x 1/2"	50
ZE-30046	1/2"-13 x 1"	50
ZE-30048	1/2"-13 x 1-1/2"	50
ZE-30050	5/8"-11 x 5/8"	25

### Varilla Roscada 1 Metro de Largo Acero Inoxidable



### Tuerca Hexagonal Acero Inoxidable Fraccional

Rosca fraccional



Código	Medidas
ZF-30010	#10-24
ZF-30012	1/4"-20
ZF-30014	5/16"-18
ZF-30016	3/8"-16
ZF-30018	7/16"-14
ZF-30020	1/2"-13
ZF-30022	5/8"-11
ZF-30024	3/4"-10
ZF-30026	7/8"-9
ZF-30028	1"-8

Código	Medidas	MIN
ZK-30010	10-24	300
ZK-30012	1/4"-20	300
ZK-30014	5/16"-18	300
ZK-30016	3/8"-16	300
ZK-30018	7/16"-14	200
ZK-30020	1/2"-13	100
ZK-30022	9/16"-12	100
ZK-30024	5/8"-11	100
ZK-30026	3/4"-10	50
ZK-30028	7/8"-9	50
ZK-30030	1"-8	50

### Tuerca Hexagonal Acero Inoxidable Métrica

Rosca métrica



Código	Medidas	MIN
ZK-30210	M4-0.70	300
ZK-30212	M5-0.80	300
ZK-30214	M6-1.00	300
ZK-30216	M8-1.25	200
ZK-30218	M10-1.50	100
ZK-30220	M12-1.75	100
ZK-30222	M14-2.00	100
ZK-30224	M16-2.00	50
ZK-30226	M18-2.50	50
ZK-30228	M20-2.50	50
ZK-30230	M24-3.00	50

### Tuerca de Seguridad Acero Inoxidable Fraccional

Rosca fraccional  
Con inserto de nailon



Código	Medidas	MIN
ZK-30610	1/4"-20	100
ZK-30612	5/16"-18	100
ZK-30614	3/8"-16	100
ZK-30616	7/16"-14	50
ZK-30618	1/2"-13	50
ZK-30620	5/8"-11	25
ZK-30622	3/4"-10	25
ZK-30624	7/8"-9	10
ZK-30626	1"-8	10

### Tuerca Hexagonal con Arandela Dentada Acero Inoxidable Fraccional

Rosca fraccional



Código	Medidas	MIN
ZK-30110	1/4"-20	100
ZK-30112	5/16"-18	100
ZK-30114	3/8"-16	100
ZK-30116	1/2"-13	50

### Tuerca Hexagonal con Arandela Dentada Acero Inoxidable Métrica

Rosca métrica



Código	Medidas	MIN
ZK-30118	M4-0.70	100
ZK-30120	M5-0.80	100
ZK-30122	M6-1.00	100
ZK-30124	M8-1.25	50
ZK-30126	M10-1.50	50
ZK-30128	M12-1.75	50



### Tuerca Mariposa Acero Inoxidable Fraccional

Rosca fraccional



Código	Medida	MIN
ZK-30410	#10-24	100
ZK-30412	1/4"-20	100
ZK-30414	5/16"-18	100
ZK-30416	3/8"-16	100
ZK-30418	1/2"-13	50

### Rondana Plana Acero Inoxidable Fraccional



Código	Medida	MIN
ZP-30010	1/4"	500
ZP-30012	5/16"	500
ZP-30014	3/8"	300
ZP-30016	7/16"	300
ZP-30018	1/2"	200
ZP-30020	5/8"	100
ZP-30022	3/4"	50
ZP-30024	7/8"	50
ZP-30026	1"	25

### Rondana Plana Acero Inoxidable Métrica



Código	Medida	MIN
ZP-30210	M6	500
ZP-30212	M8	500
ZP-30214	M10	300
ZP-30216	M12	300
ZP-30218	M16	100
ZP-30220	M20	50
ZP-30222	M24	50

### Rondana de Presión Acero Inoxidable Fraccional



Código	Medida	MIN
ZP-30310	1/4"	500
ZP-30312	5/16"	500
ZP-30314	3/8"	300
ZP-30316	7/16"	300
ZP-30318	1/2"	200
ZP-30320	5/8"	100
ZP-30322	3/4"	50
ZP-30324	7/8"	50
ZP-30326	1"	25

### Rondana de Presión Acero Inoxidable Métrica



Código	Medida	MIN
ZP-30510	M6	500
ZP-30512	M8	500
ZP-30514	M10	300
ZP-30516	M12	300
ZP-30518	M16	100
ZP-30520	M20	50
ZP-30522	M24	50

### Pija Hexagonal Punta de Broca Acero Inoxidable

Fabricada en acero inoxidable 410 de alta calidad  
Punta autoroscable  
Resistente a la corrosión, a prueba de óxido, no se deforma



Código	Medidas
ZM-00020	1/4" x 3/4"
ZM-00005	1/4" x 1"
ZM-00010	1/4" x 1-1/2"
ZM-00015	1/4" x 2"

### Pija Hexagonal Punta de Broca con Rondana Acero Inoxidable

Fabricada en acero inoxidable 410 de alta calidad  
Punta auto-rosca  
Resistente a la corrosión, a prueba de óxido, no se deforma



Código	Medidas	MIN
ZM-00110	1/4" x 3/4"	500
ZM-00100	1/4" x 1"	100
ZM-00105	1/4" x 1-1/2"	100

### Pija K-Lath Phillips Punta de Broca Acero Inoxidable

Fabricada en acero inoxidable 410 de alta calidad  
Punta auto-rosca  
Resistente a la corrosión, a prueba de óxido, no se deforma



Código	Medidas
ZN-32705	#8 x 1/2"
ZN-32710	#8 x 3/4"
ZN-32700	#8 x 1"



### Anillo de Retención Externo Tipo SH Acero Inoxidable



Código	Medida	MIN
ZB-5370SS	1/4"	100
ZB-5385SS	5/16"	100
ZB-5400SS	3/8"	100
ZB-5415SS	7/16"	100
ZB-5435SS	9/16"	100
ZB-5455SS	11/16"	100
ZB-5470SS	13/16"	50
ZB-5485SS	15/16"	50
ZB-5505SS	1-1/16"	50
ZB-5525SS	1-5/16"	50
ZB-6500	1/2"	100
ZB-6505	5/8"	100

### Anillo de Retención Interno Tipo HO Acero Inoxidable



Código	Medida	MIN
ZB-4940SS	1/4"	100
ZB-4945SS	5/16"	100
ZB-4950SS	3/8"	100
ZB-4955SS	7/16"	100
ZB-4965SS	1/2"	100
ZB-4975SS	9/16"	100
ZB-4980SS	5/8"	100
ZB-4985SS	11/16"	100
ZB-4990SS	3/4"	100
ZB-5000SS	13/16"	100
ZB-5015SS	15/16"	100

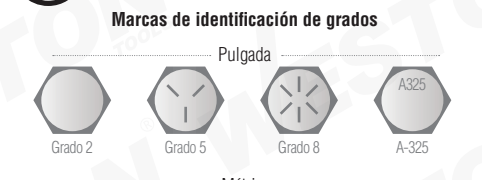
### Anillo de Retención Externo Tipo C Acero Inoxidable



Código	Medida
ZB-6000	5/16"



### SELECCIÓN DE TORNILLOS



Fuerza de Tensión en los Tornillos			
Grados y Clases			
Pulgada	PSI (libras por pulgada²)	Métrico	MPa (megapascuales)
Grado 2 (arriba de 3/4")	58015	=	400 Clase 4.6
	60000	=	414
	60916	=	420 Clase 4.8
Grado 2 (hasta 3/4")	74000	=	510
	72519	=	500 Clase 5.6
	75420	=	520 Clase 5.8
	87023	=	600 Clase 6.8
Grado 5 (arriba de 1")	105000	=	724
	120000	=	827
Grado 5 (hasta 1")	120381	=	830 Clase 8.8
	130534	=	900 Clase 9.8
	133000	=	916
Grado 7	150000	=	1034
	150839	=	1040 Clase 10.90
ASTM A574 < 1/2" - 180,000 PSI L 9 (Grado 9)	176946	=	1220 Clase 12.90
	180000	=	1240